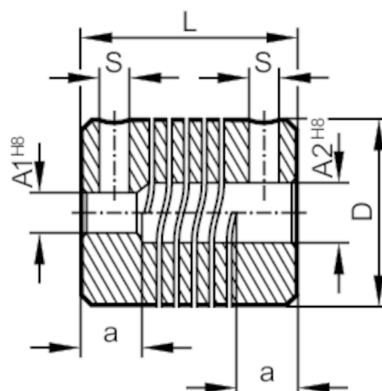


Flexible coupling for encoders

COUPLING 25-6-10-24-SV



Mechanical data

Weight	[g]	27
Dimensions	[mm]	Ø 25 / L = 24
Materials		aluminium
External diameter D	[mm]	25
Inside diameter A1	[mm]	6
Inside diameter A2	[mm]	10
Length L	[mm]	24
Depth of the clamping hub	[mm]	7
Clamp screw	[mm]	M4
Max. revolution, mechanical [U/min]		8000
Max. axial shaft misalignment	[mm]	± 0,5
Max. radial shaft misalignment	[mm]	± 0,3
Max. angular displacement	[°]	± 4,0

Remarks

Remarks	<p>The data indicated apply to couplings with the above hub borings at an ambient temperature of 23 °C.</p> <p>The values of radial, angular and axial displacement are maximum values which must not reach their maximum simultaneously while in operation.</p>
Pack quantity	1 pcs.