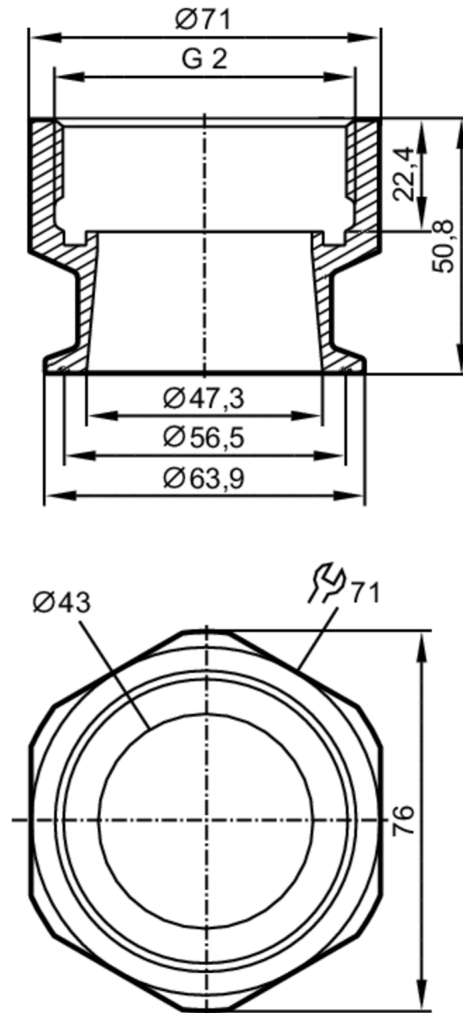


Mounting adapter for flow sensors

ADAPT G2-CLAMP/D64,0/DIN32676



Application

| | |
|-------------|-------------------------------|
| Design | for flow sensors Typ SM2, SM9 |
| Application | for industrial applications |
| Media | liquids and gases |

Tests / approvals

| | |
|------------------------------|---|
| Pressure Equipment Directive | Sound engineering practice; can be used for group 2 fluids; group 1 fluids on request |
|------------------------------|---|

Mechanical data

| | | |
|--------------------|---|------|
| Weight | [g] | 1040 |
| Materials | Adapter: stainless steel (1.4404 / 316L); O-ring: FKM 47,22 x 3,53 mm | |
| Sensor connection | G 2 | |
| Process connection | Clamp DN50 (2") DIN 32676 (ISO 2852) | |

Accessories

| | |
|----------------|------------|
| Items supplied | O-rings: 2 |
|----------------|------------|

Remarks

| | |
|---------------|--------|
| Pack quantity | 2 pcs. |
|---------------|--------|