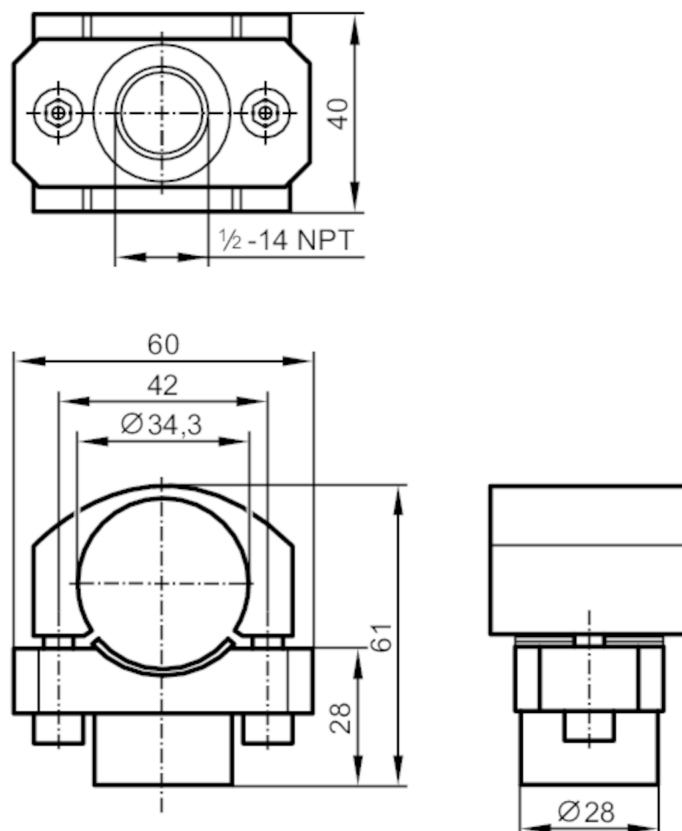


Conduit adapter mounting set for connectors

CONDUIT ADAPTER 1/2 NPT



1 Sealing

Application

Design

For pressure sensors with lateral connector, for protective tube with coupling, 1/2 - 14 NPT

Mechanical data

Weight

[g]

393.5

Materials

Clamping device: stainless steel (1.4305 / 303);
clamp: stainless steel (1.4404 / 316L); Sealing: FKM

Tightening torque

[Nm]

5; (see operating instructions)

Remarks

Pack quantity

1 pcs.