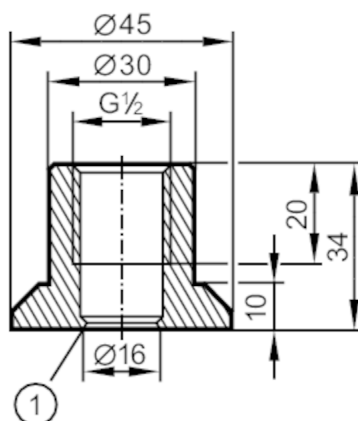




## Welding adapter for process sensors

ADAPT G1/2-WELDING SHOULDER



1 sealing edge

CRN EC 1935/2004 EHEDG Tested FCM FDA

Application		
Pressure rating	[bar]	50
Note on pressure rating		for the connection sensor - adapter
MAWP (for applications according to CRN)	[bar]	75
Tests / approvals		
Pressure Equipment Directive		A possible classification to PED depends on the application and has to be carried out by the user / operator.
Safety instructions		The compatibility between medium and product material has to be checked in all applications.
Mechanical data		
Weight	[g]	190
Materials		stainless steel (1.4435 / 316L)
Sensor connection		G 1/2 sealing cone
Process connection		welding adapter Ø 45 mm
Accessories		
Items supplied		O-rings:, FKM
Remarks		
Pack quantity		1 pcs.