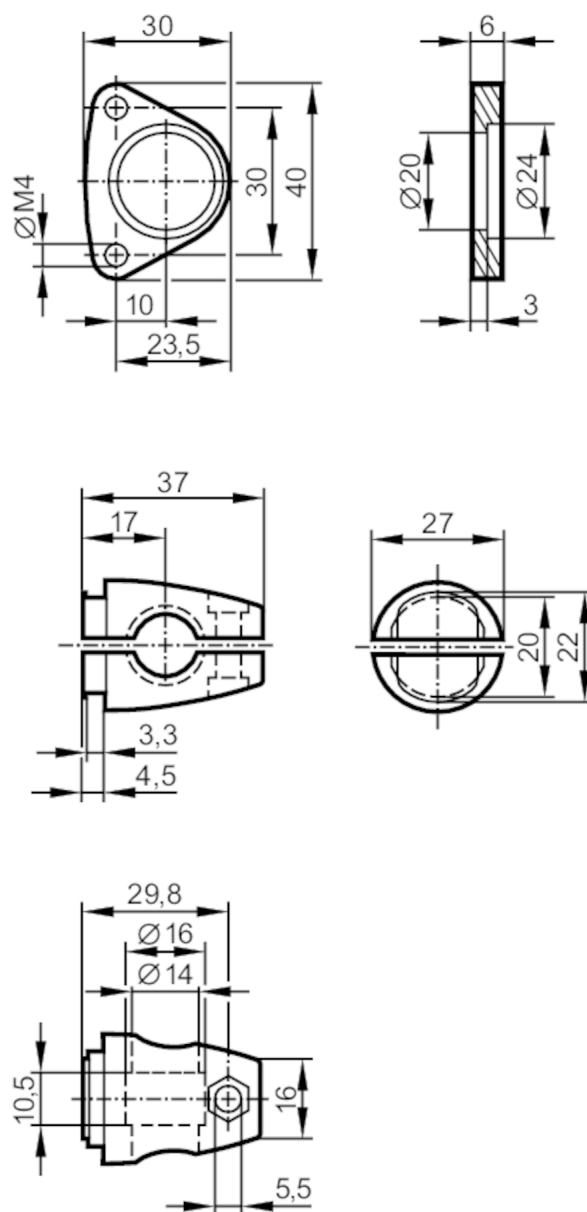


## Mounting set for photoelectric distance sensors

MOUNTING SET DUALIS/PMD 14MM



## Application

Design

clamp mounting

## Mechanical data

Weight

[g]

112

Type of mounting

Mounting rod; (Ø 14 mm)

Materials

fixture: stainless steel (1.4301 / 304); Clamp: stainless steel (1.4408)

## Remarks

Pack quantity

1 pcs.