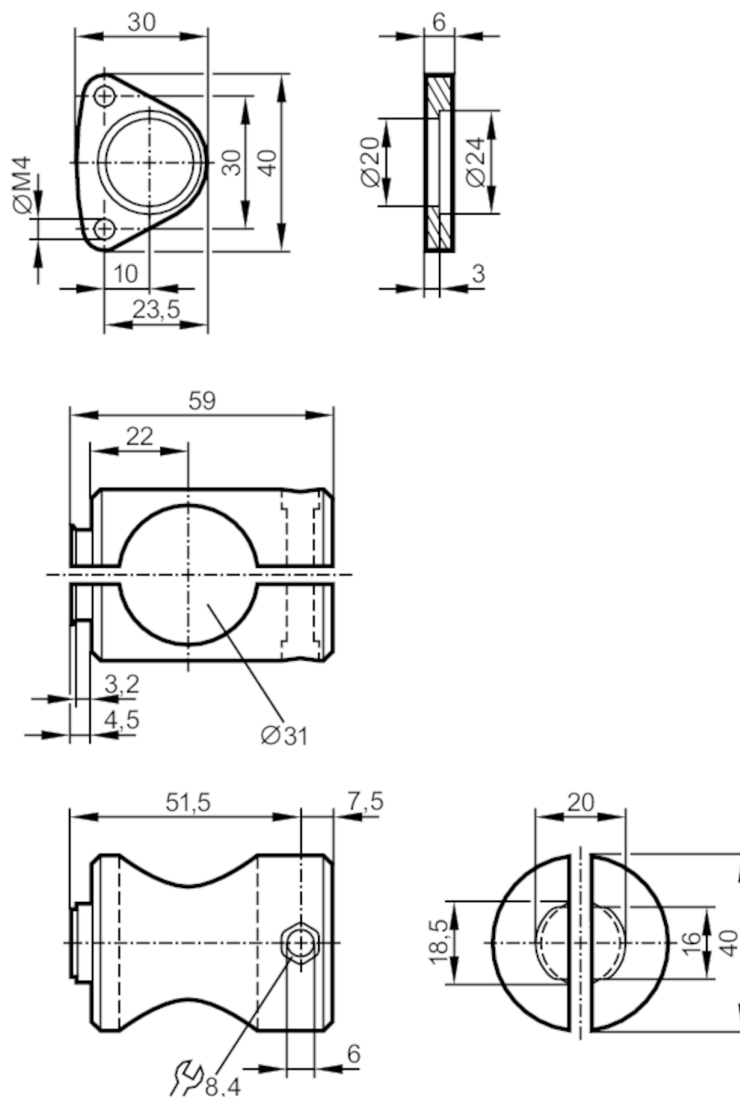


Mounting set for photoelectric distance sensors

MOUNTING SET O1D 30MM



Application

Design

clamp mounting

Mechanical data

Weight

[g]

159.5

Type of mounting

Mounting rod; (Ø 30 mm)

Materials

fixture: stainless steel (1.4571/316Ti); Clamp: aluminium
 uncoloured anodised; screws: stainless steel; nut: stainless steel

Accessories

Items supplied

socket head screws: 2 x M4 x 45

Remarks

Pack quantity

1 pcs.