

# 14. Sensepoint XCD



The standard XCD is an Ex d gas detector suitable for use in Zone 1 environments and is available in 3 versions; flammable, Oxygen and toxic. Each is supplied with a pre-installed stainless steel sensor cartridge and fully tested and calibrated ready for installation. Replacement sensor cartridges are available.

Configuration and control of the unit is achieved through use of a magnet removing the need to open the unit, while the tri-colour backlit display provides instant indication of the detector status at a glance.

The XCD catalytic sensor can be used to detect flammable gases in the range 0 to 100%LEL while the infrared (IR) sensor versions are available for the detection of methane in the range 0 to 100%LEL, propane (with cross-sensitivities to ethylene and butane) and Carbon Dioxide (CO<sub>2</sub>) in the range 0 to 2.00 %v/v. Both sensors are used in conjunction with the flammable version of the transmitter.

The electrochemical cell (EC) sensors are available for the detection of oxygen and toxic gases; Carbon Monoxide (CO), Hydrogen Sulphide (H<sub>2</sub>S), Nitrogen Dioxide (NO<sub>2</sub>) and hydrogen (H<sub>2</sub>).

Each detector is supplied with the pre-fitted sensor, nylon weather protection, stainless steel blanking plug, magnetic wand, hex keys, printed quick start guide and CD-ROM.

All transmitters are also available with Modbus interface as an option.



## 14.1 Instruments

### ATEX/IECEX/China Approvals (316SS)

Part Number	Description	GBP	PG
SPXCDASMFx	XCD Gas Detector, 4 to 20 mA output, ATEX/IECEX/Asian approvals, 2 x M20 entries, painted 316SS, includes catalytic sensor cartridge 0 to 100%LEL, user selectable FSD between 20% and 100%LEL (10%LEL resolution), includes nylon weather protection	£ 876.00	UB
SPXCDASMRx	XCD Gas Detector, 4 to 20 mA output, ATEX/IECEX/Asian approvals, 2 x M20 entries, painted 316SS, includes infrared methane sensor cartridge 0 to 100%LEL, user selectable FSD between 20% and 100%LEL (10%LEL resolution), includes nylon weather protection	£ 1,125.00	UB
SPXCDASMPx	XCD Gas Detector, 4 to 20 mA output, ATEX/IECEX/Asian approvals, 2 x M20 entries, painted 316SS, includes infrared propane sensor cartridge 0 to 100%LEL, user selectable FSD between 20% and 100%LEL (10%LEL resolution), includes nylon weather protection	£ 1,125.00	UB
SPXCDASMO1	XCD Gas Detector, 4 to 20 mA output, ATEX/IECEX/Asian approvals, 2 x M20 entries, painted 316SS, includes oxygen EC sensor cartridge 0 to 25% v/v, includes nylon weather protection	£ 1,001.00	UB
SPXCDASMHx	XCD Gas Detector, 4 to 20 mA output, ATEX/IECEX/Asian approvals, 2 x M20 entries, painted 316SS, includes hydrogen sulfide EC sensor cartridge 0 to 50ppm, user selectable FSD between 10 and 100ppm (1 ppm resolution), includes nylon weather protection	£ 1,001.00	UB
SPXCDASMCx	XCD Gas Detector, 4 to 20 mA output, ATEX/IECEX/Asian approvals, 2 x M20 entries, painted 316SS, includes carbon monoxide EC sensor cartridge 0 to 300ppm, user selectable FSD between 100 and 1000ppm (100 ppm resolution), includes nylon weather protection	£ 1,001.00	UB
SPXCDASMNX	XCD Gas Detector, 4 to 20 mA output, ATEX/IECEX/Asian approvals, 2 x M20 entries, painted 316SS, includes nitrogen dioxide EC sensor cartridge 0 to 10ppm, user selectable FSD between 10 and 50ppm (5 ppm resolution), includes nylon weather protection	£ 1,001.00	UB

# 14. Sensepoint XCD



Part Number	Description	GBP	PG
SPXCDASMG1	XCD Gas Detector, 4 to 20 mA output, ATEX/IECEX/Asian approvals, 2 x M20 entries, painted 316SS, includes hydrogen EC sensor cartridge 0 to 1000ppm, includes nylon weather protection	£ 1,001.00	UB
SPXCDASMB1	XCD Gas Detector, 4 to 20 mA output, ATEX/IECEX/Asian approvals, 2 x M20 entries, painted 316SS, includes infrared carbon dioxide sensor cartridge 0 to 2.0% v/v, includes nylon weather protection	£ 1,125.00	UB
SPXCDASMB2	XCD Gas Detector, 4 to 20 mA output, ATEX/IECEX/Asian approvals, 2 x M20 entries, painted 316SS, includes infrared carbon dioxide sensor cartridge 0 to 5.0% v/v, includes nylon weather protection	£ 1,125.00	UB

## ATEX/IECEX/Asian Approvals (LM25)

Part Number	Description	GBP	PG
SPXCDALMFx	XCD Gas Detector, 4 to 20 mA output, ATEX/IECEX/Asian approvals, 2 x M20 entries, painted LM25, includes catalytic sensor cartridge 0 to 100%LEL, user selectable FSD between 20% and 100%LEL (10%LEL resolution), includes nylon weather protection	£ 624.00	UB
SPXCDALMRx	XCD Gas Detector, 4 to 20 mA output, ATEX/IECEX/Asian approvals, 2 x M20 entries, painted LM25, includes infrared methane sensor cartridge 0 to 100%LEL, user selectable FSD between 20% and 100%LEL (10%LEL resolution), includes nylon weather protection	£ 876.00	UB
SPXCDALMPx	XCD Gas Detector, 4 to 20 mA output, ATEX/IECEX/Asian approvals, 2 x M20 entries, painted LM25, includes infrared propane sensor cartridge 0 to 100%LEL, user selectable FSD between 20% and 100%LEL (10%LEL resolution), includes nylon weather protection	£ 876.00	UB
SPXCDALMO1	XCD Gas Detector, 4 to 20 mA output, ATEX/IECEX/Asian approvals, 2 x M20 entries, painted LM25, includes oxygen EC sensor cartridge 0 to 25% v/v, includes nylon weather protection	£ 751.00	UB
SPXCDALMHx	XCD Gas Detector, 4 to 20 mA output, ATEX/IECEX/Asian approvals, 2 x M20 entries, painted LM25, includes hydrogen sulfide EC sensor cartridge 0 to 50ppm, user selectable FSD between 10 and 100ppm (1 ppm resolution), includes nylon weather protection	£ 751.00	UB
SPXCDALMCx	XCD Gas Detector, 4 to 20 mA output, ATEX/IECEX/Asian approvals, 2 x M20 entries, painted LM25, includes carbon monoxide EC sensor cartridge 0 to 300ppm, user selectable FSD between 100 and 1000ppm (100 ppm resolution), includes nylon weather protection	£ 751.00	UB
SPXCDALMNx	XCD Gas Detector, 4 to 20 mA output, ATEX/IECEX/Asian approvals, 2 x M20 entries, painted LM25, includes nitrogen dioxide EC sensor cartridge 0 to 10ppm, user selectable FSD between 10 and 50ppm (5 ppm resolution), includes nylon weather protection	£ 751.00	UB
SPXCDALMG1	XCD Gas Detector, 4 to 20 mA output, ATEX/IECEX/Asian approvals, 2 x M20 entries, painted LM25, includes hydrogen EC sensor cartridge 0 to 1000ppm, includes nylon weather protection	£ 751.00	UB
SPXCDALMB1	XCD Gas Detector, 4 to 20 mA output, ATEX/IECEX/Asian approvals, 2 x M20 entries, painted LM25, includes infrared carbon dioxide sensor cartridge 0 to 2.0% v/v, includes nylon weather protection	£ 876.00	UB
SPXCDALMB2	XCD Gas Detector, 4 to 20 mA output, ATEX/IECEX/Asian approvals, 2 x M20 entries, painted LM25, includes infrared carbon dioxide sensor cartridge 0 to 5.0% v/v, includes nylon weather protection	£ 876.00	UB

# 14. Sensepoint XCD



## UL/c-UL/INMETRO Approvals (316SS)

Part Number	Description	GBP	PG
SPXCDUSNFX	XCD Gas Detector, 4 to 20 mA output, UL/c-UL/INMETRO, 2 x 3/4" NPT entries, painted 316SS, includes catalytic sensor cartridge 0 to 100%LEL, user selectable FSD between 20% and 100%LEL (10%LEL resolution), includes nylon weather protection	£ 876.00	UB
SPXCDUSNRX	XCD Gas Detector, 4 to 20 mA output, UL/c-UL/INMETRO, 2 x 3/4" NPT entries, painted 316SS, includes infrared methane sensor cartridge 0 to 100%LEL, user selectable FSD between 20% and 100%LEL (10%LEL resolution), includes nylon weather protection	£ 1,125.00	UB
SPXCDUSNPX	XCD Gas Detector, 4 to 20 mA output, UL/c-UL/INMETRO, 2 x 3/4" NPT entries, painted 316SS, includes infrared propane sensor cartridge 0 to 100%LEL, user selectable FSD between 20% and 100%LEL (10%LEL resolution), includes nylon weather protection	£ 1,125.00	UB
SPXCDUSNO1	XCD Gas Detector, 4 to 20 mA output, UL/c-UL/INMETRO, 2 x 3/4" NPT entries, painted 316SS, includes oxygen EC sensor cartridge 0 to 25% v/v, includes nylon weather protection	£ 1,001.00	UB
SPXCDUSNHX	XCD Gas Detector, 4 to 20 mA output, UL/c-UL/INMETRO, 2 x 3/4" NPT entries, painted 316SS, includes hydrogen sulfide EC sensor cartridge 0 to 50ppm, user selectable FSD between 10 and 100ppm (1 ppm resolution), includes nylon weather protection	£ 1,001.00	UB
SPXCDUSNCX	XCD Gas Detector, 4 to 20 mA output, UL/c-UL/INMETRO, 2 x 3/4" NPT entries, painted 316SS, includes carbon monoxide EC sensor cartridge 0 to 300ppm, user selectable FSD between 100 and 1000ppm (100 ppm resolution), includes nylon weather protection	£ 1,001.00	UB
SPXCDUSNNX	XCD Gas Detector, 4 to 20 mA output, UL/c-UL/INMETRO, 2 x 3/4" NPT entries, painted 316SS, includes nitrogen dioxide EC sensor cartridge 0 to 10ppm, user selectable FSD between 10 and 50ppm (5 ppm resolution), includes nylon weather protection	£ 1,001.00	UB
SPXCDUSNG1	XCD Gas Detector, 4 to 20 mA output, UL/c-UL/INMETRO, 2 x 3/4" NPT entries, painted 316SS, includes hydrogen EC sensor cartridge 0 to 1000ppm, includes nylon weather protection	£ 1,001.00	UB
SPXCDUSNB1	XCD Gas Detector, 4 to 20 mA output, UL/c-UL/INMETRO, 2 x 3/4" NPT entries, painted 316SS, includes infrared carbon dioxide sensor cartridge 0 to 2.0% v/v, includes nylon weather protection	£ 1,125.00	UB
SPXCDUSNB2	XCD Gas Detector, 4 to 20 mA output, UL/c-UL/INMETRO, 2 x 3/4" NPT entries, painted 316SS, includes infrared carbon dioxide sensor cartridge 0 to 5.0% v/v, includes nylon weather protection	£ 1,125.00	UB

## UL/c-UL/INMETRO Approvals (LM25)

Part Number	Description	GBP	PG
SPXCDULNFX	XCD Gas Detector, 4 to 20 mA output, UL/c-UL/INMETRO, 2 x 3/4" NPT entries, painted LM25, includes catalytic sensor cartridge 0 to 100%LEL, user selectable FSD between 20% and 100%LEL (10%LEL resolution), includes nylon weather protection	£ 624.00	UB
SPXCDULNRX	XCD Gas Detector, 4 to 20 mA output, UL/c-UL/INMETRO, 2 x 3/4" NPT entries, painted LM25, includes infrared methane sensor cartridge 0 to 100%LEL, user selectable FSD between 20% and 100%LEL (10%LEL resolution), includes nylon weather protection	£ 876.00	UB
SPXCDULNPX	XCD Gas Detector, 4 to 20 mA output, UL/c-UL/INMETRO, 2 x 3/4" NPT entries, painted LM25, includes infrared propane sensor cartridge 0 to 100%LEL, user selectable FSD between 20% and 100%LEL (10%LEL resolution), includes nylon weather protection	£ 876.00	UB
SPXCDULNO1	XCD Gas Detector, 4 to 20 mA output, UL/c-UL/INMETRO, 2 x 3/4" NPT entries, painted LM25, includes oxygen EC sensor cartridge 0 to 25% v/v, includes nylon weather protection	£ 751.00	UB
SPXCDULNHX	XCD Gas Detector, 4 to 20 mA output, UL/c-UL/INMETRO, 2 x 3/4" NPT entries, painted LM25, includes hydrogen sulfide EC sensor cartridge 0 to 50ppm, user selectable FSD between 10 and 100ppm (1 ppm resolution), includes nylon weather protection	£ 751.00	UB
SPXCDULNCX	XCD Gas Detector, 4 to 20 mA output, UL/c-UL/INMETRO, 2 x 3/4" NPT entries, painted LM25, includes carbon monoxide EC sensor cartridge 0 to 300ppm, user selectable FSD between 100 and 1000ppm (100 ppm resolution), includes nylon weather protection	£ 751.00	UB
SPXCDULNNX	XCD Gas Detector, 4 to 20 mA output, UL/c-UL/INMETRO, 2 x 3/4" NPT entries, painted LM25, includes nitrogen dioxide EC sensor cartridge 0 to 10ppm, user selectable FSD between 10 and 50ppm (5 ppm resolution), includes nylon weather protection	£ 751.00	UB

# 14. Sensepoint XCD



Part Number	Description	GBP	PG
SPXCDULNG1	XCD Gas Detector, 4 to 20 mA output, UL/c-UL/INMETRO, 2 x 3/4" NPT entries, painted LM25, includes hydrogen EC sensor cartridge 0 to 1000ppm, includes nylon weather protection	£ 751.00	UB
SPXCDULNB1	XCD Gas Detector, 4 to 20 mA output, UL/c-UL/INMETRO, 2 x 3/4" NPT entries, painted LM25, includes infrared carbon dioxide sensor cartridge 0 to 2.0% v/v, includes nylon weather protection	£ 876.00	UB
SPXCDULNB2	XCD Gas Detector, 4 to 20 mA output, UL/c-UL/INMETRO, 2 x 3/4" NPT entries, painted LM25, includes infrared carbon dioxide sensor cartridge 0 to 5.0% v/v, includes nylon weather protection	£ 876.00	UB

## ATEX/IECEX/Asian Approvals (316SS) with Modbus

Part Number	Description	GBP	PG
SPXCDASMF XM	XCD Gas Detector, 4 to 20 mA and Modbus output, ATEX/IECEX/Asian approvals, 2 x M20 entries, painted 316SS, includes catalytic sensor cartridge 0 to 100%LEL, user selectable FSD between 20% and 100%LEL (10%LEL resolution), includes nylon weather protection	£ 969.00	UB
SPXCDASMR XM	XCD Gas Detector, 4 to 20 mA and Modbus output, ATEX/IECEX/Asian approvals, 2 x M20 entries, painted 316SS, includes infrared methane sensor cartridge 0 to 100%LEL, user selectable FSD between 20% and 100%LEL (10%LEL resolution), includes nylon weather protection	£ 1,219.00	UB
SPXCDASMP XM	XCD Gas Detector, 4 to 20 mA and Modbus output, ATEX/IECEX/Asian approvals, 2 x M20 entries, painted 316SS, includes infrared propane sensor cartridge 0 to 100%LEL, user selectable FSD between 20% and 100%LEL (10%LEL resolution), includes nylon weather protection	£ 1,219.00	UB
SPXCDASMO1M	XCD Gas Detector, 4 to 20 mA and Modbus output, ATEX/IECEX/Asian approvals, 2 x M20 entries, painted 316SS, includes oxygen EC sensor cartridge 0 to 25% v/v, includes nylon weather protection	£ 1,095.00	UB
SPXCDASMH XM	XCD Gas Detector, 4 to 20 mA and Modbus output, ATEX/IECEX/Asian approvals, 2 x M20 entries, painted 316SS, includes hydrogen sulfide EC sensor cartridge 0 to 50ppm, user selectable FSD between 10 and 100ppm (1 ppm resolution), includes nylon weather protection	£ 1,095.00	UB
SPXCDASMC XM	XCD Gas Detector, 4 to 20 mA and Modbus output, ATEX/IECEX/Asian approvals, 2 x M20 entries, painted 316SS, includes carbon monoxide EC sensor cartridge 0 to 300ppm, user selectable FSD between 100 and 1000ppm (100 ppm resolution), includes nylon weather protection	£ 1,095.00	UB
SPXCDASMN XM	XCD Gas Detector, 4 to 20 mA and Modbus output, ATEX/IECEX/Asian approvals, 2 x M20 entries, painted 316SS, includes nitrogen dioxide EC sensor cartridge 0 to 10ppm, user selectable FSD between 10 and 50ppm (5 ppm resolution), includes nylon weather protection	£ 1,095.00	UB
SPXCDASMG1M	XCD Gas Detector, 4 to 20 mA and Modbus output, ATEX/IECEX/Asian approvals, 2 x M20 entries, painted 316SS, includes hydrogen EC sensor cartridge 0 to 1000ppm, includes nylon weather protection	£ 1,001.00	UB
SPXCDASMB1M	XCD Gas Detector, 4 to 20 mA and Modbus output, ATEX/IECEX/Asian approvals, 2 x M20 entries, painted 316SS, includes infrared carbon dioxide sensor cartridge 0 to 2.0% v/v, includes nylon weather protection	£ 1,219.00	UB
SPXCDASMB2M	XCD Gas Detector, 4 to 20 mA and Modbus output, ATEX/IECEX/Asian approvals, 2 x M20 entries, painted 316SS, includes infrared carbon dioxide sensor cartridge 0 to 5.0% v/v, includes nylon weather protection	£ 1,219.00	UB

# 14. Sensepoint XCD



## ATEX/IECEX/Asian Approvals (LM25) WITH Modbus

Part Number	Description	GBP	PG
SPXCDALMFXM	XCD Gas Detector, 4 to 20 mA and Modbus output, ATEX/IECEX/Asian approvals, 2 x M20 entries, painted LM25, includes catalytic sensor cartridge 0 to 100%LEL, user selectable FSD between 20% and 100%LEL (10%LEL resolution), includes nylon weather protection	£ 720.00	UB
SPXCDALMRXM	XCD Gas Detector, 4 to 20 mA and Modbus output, ATEX/IECEX/Asian approvals, 2 x M20 entries, painted LM25, includes infrared methane sensor cartridge 0 to 100%LEL, user selectable FSD between 20% and 100%LEL (10%LEL resolution), includes nylon weather protection	£ 969.00	UB
SPXCDALMPXM	XCD Gas Detector, 4 to 20 mA and Modbus output, ATEX/IECEX/Asian approvals, 2 x M20 entries, painted LM25, includes infrared propane sensor cartridge 0 to 100%LEL, user selectable FSD between 20% and 100%LEL (10%LEL resolution), includes nylon weather protection	£ 969.00	UB
SPXCDALMO1M	XCD Gas Detector, 4 to 20 mA and Modbus output, ATEX/IECEX/Asian approvals, 2 x M20 entries, painted LM25, includes oxygen EC sensor cartridge 0 to 25% v/v, includes nylon weather protection	£ 845.00	UB
SPXCDALMHXM	XCD Gas Detector, 4 to 20 mA and Modbus output, ATEX/IECEX/Asian approvals, 2 x M20 entries, painted LM25, includes hydrogen sulfide EC sensor cartridge 0 to 50ppm, user selectable FSD between 10 and 100ppm (1 ppm resolution), includes nylon weather protection	£ 845.00	UB
SPXCDALMCXM	XCD Gas Detector, 4 to 20 mA and Modbus output, ATEX/IECEX/Asian approvals, 2 x M20 entries, painted LM25, includes carbon monoxide EC sensor cartridge 0 to 300ppm, user selectable FSD between 100 and 1000ppm (100 ppm resolution), includes nylon weather protection	£ 845.00	UB
SPXCDALMNXM	XCD Gas Detector, 4 to 20 mA and Modbus output, ATEX/IECEX/Asian approvals, 2 x M20 entries, painted LM25, includes nitrogen dioxide EC sensor cartridge 0 to 10ppm, user selectable FSD between 10 and 50ppm (5 ppm resolution), includes nylon weather protection	£ 845.00	UB
SPXCDALMG1M	XCD Gas Detector, 4 to 20 mA and Modbus output, ATEX/IECEX/Asian approvals, 2 x M20 entries, painted LM25, includes hydrogen EC sensor cartridge 0 to 1000ppm, includes nylon weather protection	£ 845.00	UB
SPXCDALMB1M	XCD Gas Detector, 4 to 20 mA and Modbus output, ATEX/IECEX/Asian approvals, 2 x M20 entries, painted LM25, includes infrared carbon dioxide sensor cartridge 0 to 2.0% v/v, includes nylon weather protection	£ 969.00	UB
SPXCDALMB2M	XCD Gas Detector, 4 to 20 mA and Modbus output, ATEX/IECEX/Asian approvals, 2 x M20 entries, painted LM25, includes infrared carbon dioxide sensor cartridge 0 to 5.0% v/v, includes nylon weather protection	£ 969.00	UB

## UL/c-UL/INMETRO Approvals (316SS) with Modbus

Part Number	Description	GBP	PG
SPXCDUSNFXM	XCD Gas Detector, 4 to 20 mA and Modbus output, UL/c-UL/INMETRO, 2 x 3/4" NPT entries, painted 316SS, includes catalytic sensor cartridge 0 to 100%LEL, user selectable FSD between 20% and 100%LEL (10%LEL resolution), includes nylon weather protection	£ 969.00	UB
SPXCDUSNRXM	XCD Gas Detector, 4 to 20 mA and Modbus output, UL/c-UL/INMETRO, 2 x 3/4" NPT entries, painted 316SS, includes infrared methane sensor cartridge 0 to 100%LEL, user selectable FSD between 20% and 100%LEL (10%LEL resolution), includes nylon weather protection	£ 1,219.00	UB
SPXCDUSNPXM	XCD Gas Detector, 4 to 20 mA and Modbus output, UL/c-UL/INMETRO, 2 x 3/4" NPT entries, painted 316SS, includes infrared propane sensor cartridge 0 to 100%LEL, user selectable FSD between 20% and 100%LEL (10%LEL resolution), includes nylon weather protection	£ 1,219.00	UB
SPXCDUSNO1M	XCD Gas Detector, 4 to 20 mA and Modbus output, UL/c-UL/INMETRO, 2 x 3/4" NPT entries, painted 316SS, includes oxygen EC sensor cartridge 0 to 25% v/v, includes nylon weather protection	£ 1,095.00	UB
SPXCDUSNHXM	XCD Gas Detector, 4 to 20 mA and Modbus output, UL/c-UL/INMETRO, 2 x 3/4" NPT entries, painted 316SS, includes hydrogen sulfide EC sensor cartridge 0 to 50ppm, user selectable FSD between 10 and 100ppm (1 ppm resolution), includes nylon weather protection	£ 1,095.00	UB

# 14. Sensepoint XCD



Part Number	Description	GBP	PG
SPXCDUSNCXM	XCD Gas Detector, 4 to 20 mA and Modbus output, UL/c-UL/INMETRO, 2 x 3/4" NPT entries, painted 316SS, includes carbon monoxide EC sensor cartridge 0 to 300ppm, user selectable FSD between 100 and 1000ppm (100 ppm resolution), includes nylon weather protection	£ 1,095.00	UB
SPXCDUSNXXM	XCD Gas Detector, 4 to 20 mA and Modbus output, UL/c-UL/INMETRO, 2 x 3/4" NPT entries, painted 316SS, includes nitrogen dioxide EC sensor cartridge 0 to 10ppm, user selectable FSD between 10 and 50ppm (5 ppm resolution), includes nylon weather protection	£ 1,095.00	UB
SPXCDUSNG1M	XCD Gas Detector, 4 to 20 mA and Modbus output, UL/c-UL/INMETRO, 2 x 3/4" NPT entries, painted 316SS, includes hydrogen EC sensor cartridge 0 to 1000ppm, includes nylon weather protection	£ 1,001.00	UB
SPXCDUSNB1M	XCD Gas Detector, 4 to 20 mA and Modbus output, UL/c-UL/INMETRO, 2 x 3/4" NPT entries, painted 316SS, includes infrared carbon dioxide sensor cartridge 0 to 2.0% v/v, includes nylon weather protection	£ 1,219.00	UB
SPXCDUSNB2M	XCD Gas Detector, 4 to 20 mA and Modbus output, UL/c-UL/INMETRO, 2 x 3/4" NPT entries, painted 316SS, includes infrared carbon dioxide sensor cartridge 0 to 5.0% v/v, includes nylon weather protection	£ 1,219.00	UB

## UL/c-UL/INMETRO Approvals (LM25) with Modbus

Part Number	Description	GBP	PG
SPXCDULNFXM	XCD Gas Detector, 4 to 20 mA and Modbus output, UL/c-UL/INMETRO, 2 x 3/4" NPT entries, painted LM25, includes catalytic sensor cartridge 0 to 100%LEL, user selectable FSD between 20% and 100%LEL (10%LEL resolution), includes nylon weather protection	£ 720.00	UB
SPXCDULNRXM	XCD Gas Detector, 4 to 20 mA and Modbus output, UL/c-UL/INMETRO, 2 x 3/4" NPT entries, painted LM25, includes infrared methane sensor cartridge 0 to 100%LEL, user selectable FSD between 20% and 100%LEL (10%LEL resolution), includes nylon weather protection	£ 969.00	UB
SPXCDULNPXM	XCD Gas Detector, 4 to 20 mA and Modbus output, UL/c-UL/INMETRO, 2 x 3/4" NPT entries, painted LM25, includes infrared propane sensor cartridge 0 to 100%LEL, user selectable FSD between 20% and 100%LEL (10%LEL resolution), includes nylon weather protection	£ 969.00	UB
SPXCDULNO1M	XCD Gas Detector, 4 to 20 mA and Modbus output, UL/c-UL/INMETRO, 2 x 3/4" NPT entries, painted LM25, includes oxygen EC sensor cartridge 0 to 25% v/v, includes nylon weather protection	£ 845.00	UB
SPXCDULNHXM	XCD Gas Detector, 4 to 20 mA and Modbus output, UL/c-UL/INMETRO, 2 x 3/4" NPT entries, painted LM25, includes hydrogen sulfide EC sensor cartridge 0 to 50ppm, user selectable FSD between 10 and 100ppm (1 ppm resolution), includes nylon weather protection	£ 845.00	UB
SPXCDULNCXM	XCD Gas Detector, 4 to 20 mA and Modbus output, UL/c-UL/INMETRO, 2 x 3/4" NPT entries, painted LM25, includes carbon monoxide EC sensor cartridge 0 to 300ppm, user selectable FSD between 100 and 1000ppm (100 ppm resolution), includes nylon weather protection	£ 845.00	UB
SPXCDULNXXM	XCD Gas Detector, 4 to 20 mA and Modbus output, UL/c-UL/INMETRO, 2 x 3/4" NPT entries, painted LM25, includes nitrogen dioxide EC sensor cartridge 0 to 10ppm, user selectable FSD between 10 and 50ppm (5 ppm resolution), includes nylon weather protection	£ 845.00	UB
SPXCDULNG1M	XCD Gas Detector, 4 to 20 mA and Modbus output, UL/c-UL/INMETRO, 2 x 3/4" NPT entries, painted LM25, includes hydrogen EC sensor cartridge 0 to 1000ppm, includes nylon weather protection	£ 845.00	UB
SPXCDULNB1M	XCD Gas Detector, 4 to 20 mA and Modbus output, UL/c-UL/INMETRO, 2 x 3/4" NPT entries, painted LM25, includes infrared carbon dioxide sensor cartridge 0 to 2.0% v/v, includes nylon weather protection	£ 969.00	UB
SPXCDULNB2M	XCD Gas Detector, 4 to 20 mA and Modbus output, UL/c-UL/INMETRO, 2 x 3/4" NPT entries, painted LM25, includes infrared carbon dioxide sensor cartridge 0 to 5.0% v/v, includes nylon weather protection	£ 969.00	UB

# 14. Sensepoint XCD



## 14.2 Sensors & Transmitter Assemblies

In addition to the standard XCD Detector supplied including one of three types of plug in stainless steel sensor, we offer the XCD Sensors and Transmitter assembly separately. This is typically required on larger projects where it is planned to order the transmitter and the sensors separately due to the sensors limited shelf life. These sensors simply plug into the socket at the bottom of the transmitter and the transmitter recognises the sensor type and automatically configures itself accordingly. A bump or gassing test should be performed to validate the function of XCD Assembly.

### XCD SENSORS (316SS)

Part Number	Description	GBP	PG
SPXCDXSFSS	Flammable CAT 0-100%LEL (20 to 100%LEL, 10%LEL)	£ 188.00	UC
SPXCDXSRSS	Methane IR 0-100%LEL (20 to 100%LEL, 10%LEL)	£ 500.00	UC
SPXCDXSO1SS	Oxygen 25.0% v/v only	£ 251.00	UC
SPXCDXSHSS	Hydrogen Sulfide 0-50ppm (10.0 to 100.0ppm, 1ppm)	£ 251.00	UC
SPXCDXSCSS	Carbon Monoxide 0-300ppm (100 to 1000ppm, 100ppm)	£ 251.00	UC
SPXCDXSNSS	Nitrogen Dioxide 0-10ppm (10.0 to 50.0ppm, 5ppm)	£ 251.00	UC
SPXCDXSG1SS	Hydrogen 0-1000ppm only	£ 251.00	UC
SPXCDXSPSS	Propane IR 0-100%LEL (20 to 100%LEL, 10%LEL)	£ 500.00	UC
SPXCDXSB1SS	Carbon Dioxide IR 0-2.00% v/v only	£ 500.00	UC
SPXCDXSB2SS	Carbon Dioxide IR 0-5.00% v/v only	£ 500.00	UB

### XCD TRANSMITTER (WITHOUT SENSOR)

Part Number	Description	GBP	PG
SPXCDALMTXO	XCD O2 Transmitter (without sensor), 4 to 20 mA output, ATEX/IECEX/Asian approvals, 2 x M20 entries, painted LM25, includes nylon weather protection	£ 601.00	UC
SPXCDALMTXT	XCD Toxic Transmitter (without sensor), 4 to 20 mA output, ATEX/IECEX/Asian approvals, 2 x M20 entries, painted LM25, includes nylon weather protection	£ 601.00	UC
SPXCDALMTXF	XCD IR & Flammable Transmitter (without sensor), 4 to 20 mA output, ATEX/IECEX/Asian approvals, 2 x M20 entries, painted LM25, includes nylon weather protection	£ 563.00	UC
SPXCDASMTXO	XCD O2 Transmitter (without sensor), 4 to 20 mA output, ATEX/IECEX/Asian approvals, 2 x M20 entries, painted 316SS, includes nylon weather protection	£ 899.00	UC
SPXCDASMTXT	XCD Toxic Transmitter (without sensor), 4 to 20 mA output, ATEX/IECEX/Asian approvals, 2 x M20 entries, painted 316SS, includes nylon weather protection	£ 899.00	UC
SPXCDASMTXF	XCD IR & Flammable Transmitter (without sensor), 4 to 20 mA output, ATEX/IECEX/Asian approvals, 2 x M20 entries, painted 316SS, includes nylon weather protection	£ 814.00	UC
SPXCDALMTXOM	XCD O2 Transmitter (without sensor), 4 to 20 mA and Modbus output, ATEX/IECEX/Asian approvals, 2 x M20 entries, painted LM25, includes nylon weather protection	£ 712.00	UC
SPXCDALMTXTM	XCD Toxic Transmitter (without sensor), 4 to 20 mA and Modbus output, ATEX/IECEX/Asian approvals, 2 x M20 entries, painted LM25, includes nylon weather protection	£ 712.00	UC
SPXCDALMTXFM	XCD IR & Flammable Transmitter (without sensor), 4 to 20 mA and Modbus output, ATEX/IECEX/Asian approvals, 2 x M20 entries, painted LM25, includes nylon weather protection	£ 657.00	UC
SPXCDASMTXOM	XCD O2 Transmitter (without sensor), 4 to 20 mA and Modbus output, ATEX/IECEX/Asian approvals, 2 x M20 entries, painted 316SS	£ 1,013.00	UC
SPXCDASMTXTM	XCD Toxic Transmitter (without sensor), 4 to 20 mA and Modbus output, ATEX/IECEX/Asian approvals, 2 x M20 entries, painted 316SS	£ 1,013.00	UC
SPXCDASMTXFM	XCD IR & Flammable Transmitter (without sensor), 4 to 20 mA and Modbus output, ATEX/IECEX/Asian approvals, 2 x M20 entries, painted 316SS	£ 908.00	UC
SPXCDULNTXO	XCD O2 Transmitter (without sensor), 4 to 20 mA output, UL/c-UL/INMETRO, 2 x 3/4" NPT entries, painted LM25, includes nylon weather protection	£ 601.00	UC
SPXCDULNTXT	XCD Toxic Transmitter (without sensor), 4 to 20 mA output, UL/c-UL/INMETRO, 2 x 3/4" NPT entries, painted LM25, includes nylon weather protection	£ 601.00	UC
SPXCDULNTXF	XCD IR & Flammable Transmitter (without sensor), 4 to 20 mA output, UL/c-UL/INMETRO, 2 x 3/4" NPT entries, painted LM25, includes nylon weather protection	£ 563.00	UC
SPXCDUSNTXO	XCD O2 Transmitter (without sensor), 4 to 20 mA output, UL/c-UL/INMETRO, 2 x 3/4" NPT entries, painted 316SS, includes nylon weather protection	£ 899.00	UC
SPXCDUSNTXT	XCD Toxic Transmitter (without sensor), 4 to 20 mA output, UL/c-UL/INMETRO, 2 x 3/4" NPT entries, painted 316SS, includes nylon weather protection	£ 899.00	UC

# 14. Sensepoint XCD



Part Number	Description	GBP	PG
SPXCDUSNTXF	XCD IR & Flammable Transmitter (without sensor), 4 to 20 mA output, UL/c-UL/INMETRO, 2 x 3/4" NPT entries, painted 316SS, includes nylon weather protection	£ 814.00	UC
SPXCDULNTXOM	XCD O2 Transmitter (without sensor), 4 to 20 mA and Modbus output, UL/c-UL/INMETRO, 2 x 3/4" NPT entries, painted LM25, includes nylon weather protection	£ 712.00	UC
SPXCDULNTXTM	XCD Toxic Transmitter (without sensor), 4 to 20 mA and Modbus output, UL/c-UL/INMETRO, 2 x 3/4" NPT entries, painted LM25, includes nylon weather protection	£ 712.00	UC
SPXCDULNTXFM	XCD IR & Flammable Transmitter (without sensor), 4 to 20 mA and Modbus output, UL/c-UL/INMETRO, 2 x 3/4" NPT entries, painted LM25, includes nylon weather protection, includes nylon weather protection	£ 657.00	UC
SPXCDUSNTXOM	XCD O2 Transmitter (without sensor), 4 to 20 mA and Modbus output, UL/c-UL/INMETRO, 2 x 3/4" NPT entries, painted 316SS, includes nylon weather protection	£ 1,013.00	UC
SPXCDUSNTXTM	XCD Toxic Transmitter (without sensor), 4 to 20 mA and Modbus output, UL/c-UL/INMETRO, 2 x 3/4" NPT entries, painted 316SS, includes nylon weather protection	£ 1,013.00	UC
SPXCDUSNTXFM	XCD IR & Flammable Transmitter (without sensor), 4 to 20 mA and Modbus output, UL/c-UL/INMETRO, 2 x 3/4" NPT entries, painted 316SS, includes nylon weather protection	£ 908.00	UC



## 15. Sensepoint XCD RFD (Remote Flammable Detector)



XCD RFD transmitter for use with the remote plug-in sensors listed below, or with the Sensepoint flammable sensors (standard or high temperature) listed else where in this price list. XCD RFD transmitter is supplied complete with 2 x M20 side cable entries, 1 x M25 sensor bottom entry, 1 x M20 blanking plug, allen keys, operating magnet, quick start guide, certificate of inspection & test, hex wrench for earth screw and instruction manual CD. Units are 100% inspected prior to despatch from the factory. Remote Flammable sensor and junction box to be ordered separately.



### 15.1 Instruments

#### XCD RFD Transmitter (Transmitter only)

Part Number	Description	GBP	PG
SPXCDASMRFD	XCD RFD Transmitter, 4 to 20 mA output, ATEX/IECEX, 2 x M20 entries, 1 x M25 entry, painted 316SS	£ 876.00	UB
SPXCDALMRFD	XCD RFD Transmitter, 4 to 20 mA output, ATEX/IECEX, 2 x M20 entries, 1 x M25 entry, painted LM25	£ 624.00	UB
SPXCDUSNRFD	XCD RFD Transmitter, 4 to 20 mA output, cCSAus/INMETRO, 3 x 3/4" NPT entries, painted 316SS	£ 876.00	UB
SPXCDULNRFD	XCD RFD Transmitter, 4 to 20 mA output, cCSAus/INMETRO, 3 x 3/4" NPT entries, painted LM25	£ 624.00	UB

#### XCD RFD transmitter and Remote Plug-in Sensor and Socket

XCD RFD Remote Plug-in Sensor and Socket is compatible with the Honeywell Analytics certified junction box (00780-A-0100).

Cable and glands are not part of the standard supply. Weather Proof Cap (SPXCDWP) must be fitted to maintain

IP rating of remote plug-in sensor.

#### ATEX/IECEX/Asian Approvals (LM25)

Part Number	Description	GBP	PG
SPXCDXSRFXSS	XCD RFD remote plug-in sensor and socket, includes catalytic sensor cartridge 0 to 100%LEL	£ 219.00	UB
SPXCDXSRXSS	XCD RFD remote plug-in sensor and socket, includes infrared methane sensor cartridge 0 to 100%LEL	£ 532.00	UB
SPXCDXSRPXSS	XCD RFD remote plug-in sensor and socket, includes infrared propane sensor cartridge 0 to 100%LEL	£ 532.00	UB
SPXCDXSRB1SS	XCD RFD remote plug-in sensor and socket, includes infrared carbon dioxide sensor cartridge 0 to 2.0% v/v	£ 532.00	UB
SPXCDXSRB2SS	XCD RFD remote plug-in sensor and socket, includes infrared carbon dioxide sensor cartridge 0 to 5.0% v/v	£ 532.00	UB

#### XCD RFD Transmitter with Modbus (Transmitter only)

Part Number	Description	GBP	PG
SPXCDASMRFDM	XCD RFD Transmitter, 4 to 20 mA and Modbus output, ATEX/IECEX, 2 x M20 entries, 1 x M25 entry, painted 316SS	£ 969.00	UB
SPXCDALMRFDM	XCD RFD Transmitter, 4 to 20 mA and Modbus output, ATEX/IECEX, 2 x M20 entries, 1 x M25 entry, painted LM25	£ 720.00	UB
SPXCDUSNRFDM	XCD RFD Transmitter, 4 to 20 mA and Modbus output, cCSAus/INMETRO, 3 x 3/4" NPT entries, painted 316SS	£ 969.00	UB
SPXCDULNRFDM	XCD RFD Transmitter, 4 to 20 mA and Modbus output, cCSAus/INMETRO, 3 x 3/4" NPT entries, painted LM25	£ 720.00	UB

### 15.2 Sensors

#### XCD RFD plug-in sensors

Part Number	Description	GBP	PG
SPXCDXSFSS	Flammable CAT 0-100%LEL (20 to 100%LEL, 10%LEL)	£ 188.00	UC
SPXCDXSRXSS	Methane IR 0-100%LEL (20 to 100%LEL, 10%LEL)	£ 500.00	UC
SPXCDXSPXSS	Propane IR 0-100%LEL (20 to 100%LEL, 10%LEL)	£ 500.00	UC
SPXCDXSB1SS	Carbon Dioxide IR 0-2.00% v/v only	£ 500.00	UC

## 16. Sensepoint XCD RTD (Remote Toxic Detector)



XCD RTD transmitter for use with the Sensepoint toxic sensors listed elsewhere in this price list. XCD 4~20mA input transmitter is supplied complete with 2 x M20 (ATEX / GB&CCCF) cable entry, 1 x M25 sensor entry, 1 x M20 blanking plug, allen key for stopper, operating magnet, quick start guide, certificate of inspection & test, hex wrench for earth screw and instruction manual CD. Units are 100% inspected prior to despatch from the factory. Sensepoint toxic sensor to be ordered separately.



### 16.1 Instruments

#### 4-20mA Input Transmitter (Transmitter Only)

Part Number	Description	GBP	PG
SPXCDASMTX4	XCD RTD Transmitter, 4 to 20 mA output, ATEX/IECEX, 2 x M20 entries, 1 x M25 entry, painted 316SS	£ 876.00	UB
SPXCDALMTX4	XCD RTD Transmitter, 4 to 20 mA output, ATEX/IECEX, 2 x M20 entries, 1 x M25 entry, painted LM25	£ 624.00	UB
SPXCDUSNTX4	XCD RTD Transmitter, 4 to 20 mA output, cCSAus, 3 x 3/4" NPT entries, painted 316SS	£ 876.00	UB
SPXCDULNTX4	XCD RTD Transmitter, 4 to 20 mA output, cCSAus, 3 x 3/4" NPT entries, painted LM25	£ 624.00	UB

#### 4-20mA Input Transmitter with Modbus (Transmitter Only)

Part Number	Description	GBP	PG
SPXCDASMTX4M	XCD RTD Transmitter, 4 to 20 mA and Modbus output, ATEX/IECEX, 2 x M20 entries, 1 x M25 entry, painted 316SS	£ 969.00	UB
SPXCDALMTX4M	XCD RTD Transmitter, 4 to 20 mA and Modbus output, ATEX/IECEX, 2 x M20 entries, 1 x M25 entry, painted LM25	£ 720.00	UB
SPXCDUSNTX4M	XCD RTD Transmitter, 4 to 20 mA and Modbus output, cCSAus, 3 x 3/4" NPT entries, painted 316SS	£ 969.00	UB
SPXCDULNTX4M	XCD RTD Transmitter, 4 to 20 mA and Modbus output, cCSAus, 3 x 3/4" NPT entries, painted LM25	£ 720.00	UB

# 17. Sensepoint XCD Accessories and Spares



## 17a. XCD Accessories

Note: Accessory selection for XCD RTD depends on sensor type choice

### XCD Accessories

Part Number	Description	GBP	PG
S3KCAL	Calibration cup (flow adapter) for Series 3000 and XNX EC toxic sensors	£ 51.00	UC
SPXCDCC	Collecting cone for use with lighter than air gases	£ 49.00	UC
SPXCDDMK	Duct mounting kit	£ 154.00	UC
SPXCMTBR	Mounting bracket (inc. bolts, nuts, brackets)	£ 50.00	UC
SPXCSDP	Sunshade / Deluge Protection	£ 150.00	UC
00780-A-0100	Honeywell Junction Box- Bartec OTB122 With Continuity Plate 1 X 25mm - 3 X 20mm Entries - ATEX Approved	£ 73.00	UC
90068-A-8204	Gassing Block 316SST. 6mm O/D Connector to Sensor and 6mm Tube Connector to Gas Bottle	£ 121.00	UC
90068-C-8290	PTFE Tubing 6mm O/D x 4mm I/D. Price per Meter	£ 14.00	UC
90068-C-8291	PTFE Tubing 8mm O/D x 6mm I/D. Price per Meter	£ 24.00	UC
90068-C-8292	Soft PVC Tubing 8mm O/D x 5mm I/D. Price per Meter	£ 4.00	UC
ADU300429	Adaptor, ATEX, Ex d e, 316SS, M20 (male) to 1/2"NPT (female)	£ 32.00	UC
RDU303029	Reducer, ATEX, Ex d e, 316SS, 3/4"NPT (male) to 1/2"NPT (female)	£ 32.00	UC
PDU300400	ATEX & CSAUS Marked, Ex d e, 316SS, IP66, M20 Blanking Plug	£ 19.00	UC
PDU303000	ATEX & CSAUS Marked, Ex d e, 316SS, IP66, 3/4" NPT Blanking Plug	£ 19.00	UC
X4S-2006662	Field Device Tag Label (Based on Drawing Number 90084-C-7013). Material: 316 Stainless Steel (Supplied loose & to be assigned at site) Dimensions: 80x20x1.2mm (LxHxD) Text Height & Length: 1 row of 5mm engraved text (Max. Characters of 15 off). Note: Upon purchase order placement, please state the text per each tag required	£ 17.00	UC



Calibration Cup



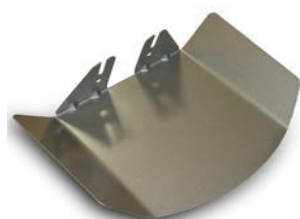
Collecting Cone



Duct Mounting Kit



Mounting Bracket



Sunshade / Deluge Protection  
SPXCSDP



Honeywell Junction Box



Gassing Block 316SST



PTFE Tubing 8mm O/D  
x 6mm I/D  
90068-C-8291



Soft PVC Tubing 8mm O/D x  
5mm I/D  
90068-C-8292

# 17. Sensepoint XCD Accessories and Spares



## 17b. XCD Spare Parts

Legend	Part	Order Number	Description	GBP	PG
1	XCD Service Kit	SPXCDSERVK	O-ring front cover (2 pieces)	£ 33.00	UC
5			Terminal module screw (3 pieces)		
7			Earth screw and bracket (2 pieces)		
9			O-ring weather housing		
10			O-ring cartridge retainer (2 pieces)		
11			O-ring on the cartridge (2 pieces)		
15			Locking screw for front cover and sensor retainer (2 pieces)		
16			Magnet (1 piece)		
17	XCD Service Tool Kit	SPXCDTOOLK	Hex wrench for earth screw (1 piece)	£ 29.00	UC
18			Allen key for locking screws (1 piece)		
2	Display Module	SPXCDDMF	Replacement display module for FLAM and IR	£ 251.00	UC
		SPXCDDMT	Replacement display module for O2 & Toxic	£ 251.00	UC
		SPXCDDMFM	Replacement display module FLAM and IR with Modbus	£ 376.00	UC
		SPXCDDMTM	Replacement display module O2 & Toxic with Modbus	£ 376.00	UC
		SPXCDDMFM12	Replacement display module FLAM and IR with Modbus, 12V version	£ 376.00	UC
		SPXCDDMTM12	Replacement display module O2 & Toxic with Modbus, 12V version	£ 376.00	UC
		SPXCDDMR	Replacement display module XCD RFD Flam & IR	£ 251.00	UC
		SPXCDDMRM	Replacement display module XCD RFD Flam & IR, Modbus	£ 376.00	UC
		SPXCDDM4	Replacement display module XCD RTD Toxic & O2	£ 251.00	UC
		SPXCDDM4M	Replacement display module XCD RTD Toxic & O2, Modbus	£ 376.00	UC
3	XCD Terminals Kit	SPXCDTMK	Terminal block for relays (green)	£ 30.00	UC
4			Terminal block power & signal (green)		
6	Terminal Module (including the terminals: Legend-3 and -4)	SPXCDTMF	Replacement terminal module for FLAM and IR	£ 251.00	UC
		SPXCDTMO	Replacement terminal module for O2	£ 251.00	UC
		SPXCDTMT	Replacement terminal module for Toxic	£ 251.00	UC
		SPXCDTMF12	Replacement terminal module for FLAM and IR, 12V version	£ 251.00	UC
		SPXCDTMO12	Replacement terminal module for O2, 12V version	£ 251.00	UC
		SPXCDTMT12	Replacement terminal module for Toxic, 12V version	£ 251.00	UC
		SPXCDTMR	Replacement terminal Module XCD RFD	£ 251.00	UC
		SPXCDTM4	Replacement terminal module XCD RTD	£ 251.00	UC
8	Blanking Plug	SPXCDNPTP	3/4"NPT plug (Certified as part of Ex d enclosure)	£ 26.00	UC
		SPXCDM20P	M20 plug (Certified as part of Ex d enclosure)	£ 26.00	UC
12	Sensor Cartridge	Please see "Replacement Sensor Cartridges" part of XCD price list			
13	Cartridge Retainer	SPXCDSRLS	Cartridge retainer with locking screw	£ 38.00	UC
14	Weather Proof Cap	SPXCDWP	Weather proof cap	£ 31.00	UC

# 17. Sensepoint XCD Accessories and Spares

