

15A
d/p Cell[®] Transmitter
Styles B, C, D, and E

Model Code

<u>Description</u>	<u>Model</u>
Transmitter AISI Type 316 Stainless Steel (316 ss) Body	15A
<u>Span Limits</u> 1.3 and 6 kPa, 5 and 25 inH ₂ O, or 13 mbarΔP	-L
<u>Body Material</u> 316 ss (15A only)	S
<u>Process Connectors</u> Tapped for 1/4 NPT	1
Tapped for 1/2 NPT	2
Tapped for R1/4	3
Tapped for R1/2	4
Weld neck for 14 x 21 mm tube (1/2 in Schedule 80 pipe)	6
None, Body tapped for 1/4 NPT	0
<u>Optional Suffix</u> Zero Elevation Kit	-L
Zero Suppression Kit	-R

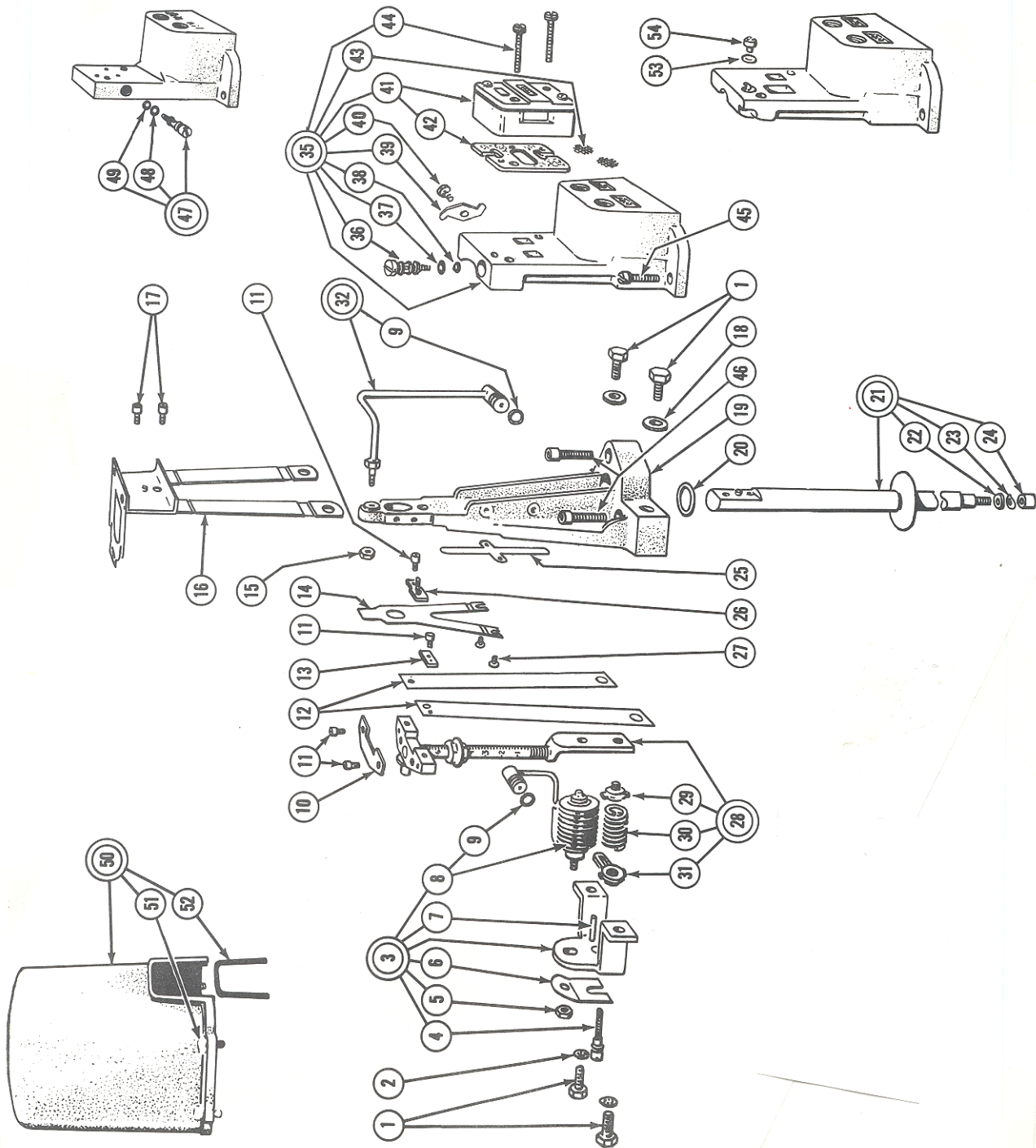
Give instrument Model Code when ordering.

*Parts preceded by an asterisk are recommended spare parts.
 See Recommended Spare Parts Summary section for quantities.

TO ORDER PARTS, CALL 1-866-746-6477.

Parts

Figure 1. Force Balance Unit (Items 1-32)



PARTS

- Part N0999SL 20 to 100 kPa, 3 to 15 psi, 0.2 to 1.0 bar or kg/cm² output
 Part N0999SG 3 to 27 psi output
 Part N0999SG 20 to 100 kPa, 3 to 15 psi, 0.2 to 1.0 bar or kg/cm² output, used with cells having low differential measurement spans (ranges 0-2 to 0-4.9 inH₂O or 0-0.6 to 0-1.3 kPa)
 Part N0999SL 20 to 100 kPa, 3 to 15 psi, 0.2 to 1.0 bar or kg/cm² output, used on oxygen service in cells containing Fluorolube filled capsule. (Note that unit also requires a Dashpot Kit N0138GA, not listed.)

Table 1. Parts for Figure 1

Item	Part No.	Qty.	Part Name
1	U0102LN	4	Screw, Hex H., 0.250-28 x 0.500
2	0048219	2	Lockwasher
3	Below	1	Bracket Assembly
	U0119TA		For N0999SL
	U0119TF		For N0999SG
4	U0102FY	1	Screw
5	0017611	1	Nut, 0.190-32
6	U0102FZ	1	Spring
7	U0102NA	1	Pin
8	Below	1	Bellows Assembly
	U0119TC		For N0999SL
	U0119TG		For N0999SG
*9	D0123MZ		O-ring, 4.5 mm (0.18 in) ID
10	U0102KP	1	Plate
11	X0153ZC	4	Screw, Socket H., 0.138-32 x 0.187
12	U0102KL	2	Flexure
13	U0102LP	1	Plate
14	N0999MH	1	Flapper
15	X0104EB	1	Nut, 0.190-32
16	N0999FM	1	Flexure Assembly
17	X0100ML	2	Screw, Socket H., 0.164-32 x 0.250
18	X0166MX	2	Washer
19	N0999ML	1	Base
20	N0143XN	1	O-ring, 15.6 mm (0.61 in) ID
21	Below	1	Force Bar Assembly
	N0143MK		316 ss (standard)
	B0123BC		With Tantalum Seal
22	N0143SB	1	Washer, 316 ss
23	U0102MX	1	Dished Washer, cobalt alloy
24	U0102LE	1	Nut, 0.250-28, 316 ss
25	N0142NY	1	Spacer
26	U0102TE	1	Bracket Assembly
27	0023442	2	Screw F.H., 0.099-48 x 0.187
28	N0999MP	1	Vernier Range Bar Assembly (for N0999SG)
29	U0102KR	1	Spring Holder
30	N0999MC	1	Spring
31	U0102KC	1	Spring Holder

Table 1. Parts for Figure 1 (Continued)

Item	Part No.	Qty.	Part Name
28	N0999QA	1	Vernier Range Bar Assembly (for N0999SL)
29	U0102KR	1	Spring Holder
30	N0999MG	1	Spring
31	U0102KC	1	Spring Holder
*32	U0119TB	1	Nozzle Assembly
*9	D0123MZ	1	O-ring, 4.5 mm (0.18 in) ID
OTHER PARTS			
35	D0124QJ	1	Relay Mounting Assembly, 1/4 NPT (gray)
*36	D0124QP	1	Orifice Screw Assembly
*37	D0123MZ	1	O-ring, 4.5 mm (0.18 in) ID
*38	A037744	1	O-ring, 2.9 mm (0.11 in) ID
39	U0102MF	1	Clamp
40	X0100AA	1	Screw, F.H., 0.138-32 x 0.218
*41	C0136HZ	1	Relay Replacement Kit
*42	C0100EM	1	Gasket
*43	U0103FP	2	Screen
44	X0116CS	2	Screw, Pan H., 0.190-32 x 1.000
45	0006534	2	Screw, F.H., 0.190-32 x 0.500
46	X0172NK	3	Screw, Socket H., 0.250-21 x 0.875
*47	C0130EF	1	Screw Assembly (prior to January 1974)
*48	D0123MZ	1	O-ring, 4.5 mm (0.18 in) ID
*49	A037744	1	O-ring, 2.9 mm (0.11 in) ID
50	B1277PM	1	Cover Assembly, Plastic
51	D0129GH	4	Screw (used with plastic cover)
52	B1271CY	1	Gasket
*53	A037744	1	O-ring (used from Jan. 1974 to Sept. 1977)
*54	D0124JG	1	Restrictor (used from Jan. 1974 to Sept. 1977)
–	Below	1	Scale
	N0148RL		5 to 25 inH ₂ O
	U6002WT		1.3 to 6.0 kPa
	U6002WY		13 to 60 mbar
	U6002XM		125 to 630 mmH ₂ O

Figure 2. 15 d/p Cell Transmitter, Styles B, C D, and E

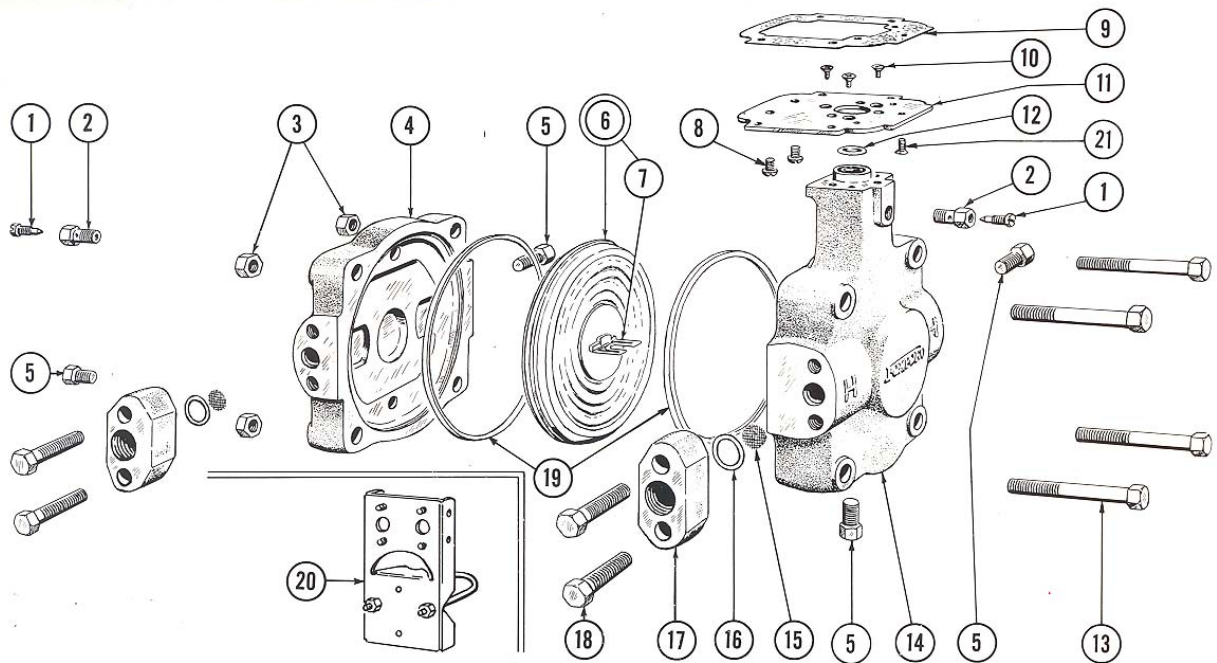


Table 2. Parts for Figure 2

Item	Part No.	Qty.	Part Name
1	B0138MJ	2	Vent Screw, 316 ss
2	D0161QT	2	Vent Plug, 316 ss
3	Below	4	Nut, 0.500-20
	X0104AB		Cadmium plated steel (standard)
	X0118AP		17-4 PH ss
4	D0117TT	1	Cover, 316 ss
5	D0161LU	4	Pipe Plug, 316 ss
6	Below	1	Capsule Assembly, 316 ss, Ranges 0-5 to 0-25 inH ₂ O, 0-1.3 to 0-6 kPa, 0-13 to 0-60 mbarΔP
	N0150TN		Silicone filled (standard)
	N0150TP		Fluorolube filled (cleaned for oxygen service)
	N0150TQ		High viscosity fill
	N0150TR		Gold plated (includes plated flexure)
7	D0114XZ	1	Flexure Assembly, 316 ss
8	X0100SB	2	Screw, R.H., 0.250-28 x 0.375
9	U0102ML	1	Gasket
10	0012691	3	Screw, F.H., 0.164-32 x 0.375
11	D0129GR	1	Plate
*12	Below	1	O-ring
	U0102MY		Silicone (standard)
	U0102XK		Glass filled ptfe (to 375°F, 190°C)
	U0102TK		Viton A
	U0102XE		ptfe (cleaned for oxygen service)
-	F0101ES	-	Calibrating Screw Assembly

Table 2. Parts for Figure 2 (Continued)

Item	Part No.	Qty.	Part Name
13	Below		Screw, Hex H., 0.500-20 x 3.250
	X0100BM		Cadmium plated steel (standard)
	X0118AE		17-4 PH ss
14	D0117TS	1	Body, 316 ss
*15	D0114FL	2	Screen, 316 ss
*16	Below	2	Gasket
	D0114RB		ptfe (standard)
	D0120AC		Glass filled ptfe
	U0102XC		Gasket Pair, ptfe (cleaned for oxygen service)
17	–	2	Connector (see Table 1)
18	Below	4	Screw, Hex H., 0.437-20 x 1.500
	X0100MN		Cadmium plated steel (standard)
	X0118AX		17-4 PH ss
18	Below	4	Screw, Hex H., 0.437-20 x 1.000 (for welding neck connection assemblies)
	X0100NT		Cadmium plated steel (standard)
	X0118AY		17-4 PH ss
*19	Below	2	Gasket
	D0124DN		316 ss (standard)
	D0117TW		ptfe
	D0124BE		Glass filled ptfe (to 375°F, 190°C)
	U0102XA	1	Gasket Pair, ptfe (cleaned for oxygen service)
20	N0141ZT	1	Mounting Set
21	X0100BX	1	Screw, F.H., 0.138-32 x 0.375

Figure 3. Zero Elevation Kit

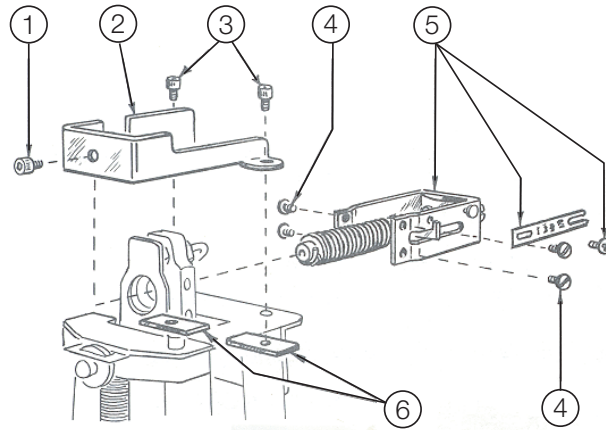


Table 3. Parts for Figure 3

Item	Part No.	Qty.	Part Name
—	U0122BS	—	Zero Elevation Kit
1	X0116PB	1	Screw, Socket H., 0.125-40 x 0.187
2	N0138GB	1	Bracket
3	U0124EZ	2	Screw, Socket H., 0.138-32 x 0.312
4	X0100ZB	4	Screw, Pan H., 0.125-40 x 0.156
5	U0122BB	1	Spring Assembly
6	N0138BS	2	Plate

— NOTE

Also used with 15 to 3 psi (reverse) output.

Figure 4. Zero Suppression Kit

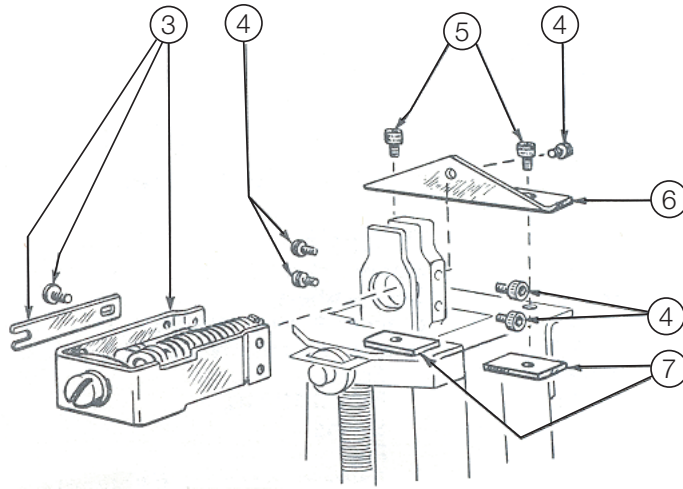


Table 4. Parts for Figure 4

Item	Part No.	Qty.	Part Name
-	U0122BS	-	Zero Elevation Kit
1	X0116PB	1	Screw, Socket H., 0.125-40 x 0.187
2	N0138GB	1	Bracket
3	U0124EZ	2	Screw, Socket H., 0.138-32 x 0.312
4	X0100ZB	4	Screw, Pan H., 0.125-40 x 0.156
5	U0122BB	1	Spring Assembly
6	N0138BS	2	Plate

Figure 5. Zero Elevation Kit
(Optional use with Fluorolube Filled Capsules)

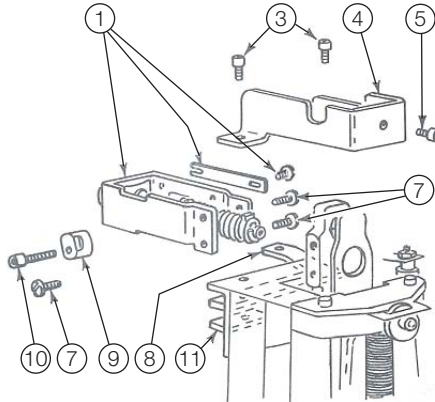


Table 5. Parts List for Figure 5

Item	Part No.	Qty.	Part Name
–	N0138GG	–	Zero Elevation Kit
1	U0122BB	1	Spring Assembly
3	U0124EZ	2	Screw, Socket H., 0.138-32 x 0.312
4	N0138GB	1	Bracket
5	X0116PB	1	Screw, Socket H., 0.125-40 x 0.250
7	X0100ZB	3	Screw, Pan H., 0.125-40 x 0.156
8	U0114BM	1	Bracket
9	U0122BX	1	Stop
10	U0122BY	1	Screw, Socket H., 0.125-40 x 0.500
11	N0138BS	2	Plate

Figure 6. Zero Suppression Kit
(Optional use with Fluorolube Filled Capsules)

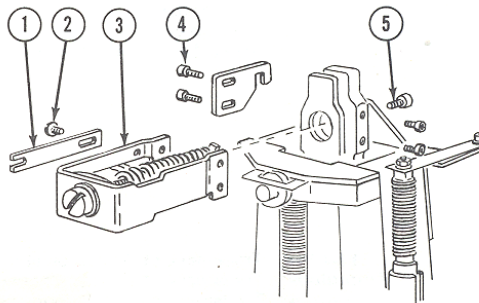


Table 6. Parts List for Figure 6

Item	Part No.	Qty.	Part Name
–	U0122BN	–	Zero Suppression Kit
1	U0102TF	1	Scale
2	X0100TX	1	Screw, Pan. H., 0.125-40 x 0.125
3	U0122BB	1	Spring Assembly
4	X0116ET	2	Screw, Socket H., 0.125-40 x 0.250
5	X0116PB	1	Screw, Socket H., 0.125-40 x 0.187

Figure 7. Integral Air Filter Kit Set Using Fixed Pressure Regulator

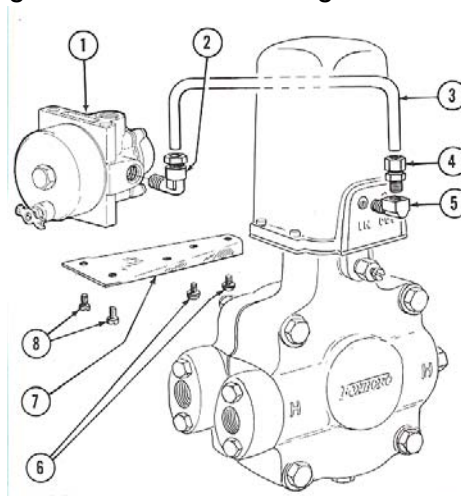


Table 7. Parts List for Figure 7

Item	Part No.	Qty.	Part Name
–	Below	1	Air Filter Set
	B0110XW		With copper tube
	B0127YY		With polyolefin tube
1	B0123HD	1	Filter Regulator
2	X0127BE	1	Elbow
3	Below	1	Tube
	B0114BY		Copper
	B0127YF		Polyolefin coated
–	X0168FF	2	Shrinkable Tube (used at each end of polyolefin coated tube)
4	0014802B	1	Connector
5	B0114BK	1	Elbow
6	0041292	2	Screw, R.H., 0.250-28 x 0.375 with lockwasher
7	U0106MN	1	Bracket
8	X0100NR	2	Screw, F.H., 0.250-20 x 0.375

Figure 8. Integral Air Filter Set Using Adjustable Pressure Regulator

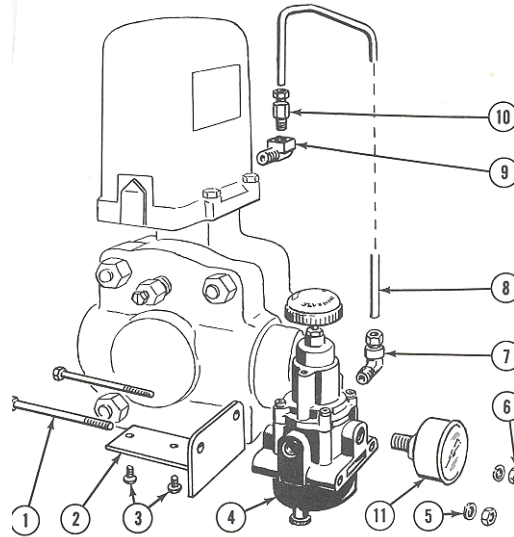


Table 8. Connectors (See Figure 2) (Figure E820A)

Item No.	Part Name	316 ss	Cadmium Plated Carbon Steel
17	Connector, 1/2 NPT	N0141XN	N0141XM
17	Connector, 1/4 NPT	N0141XT	N0141XF
17	Connector, R 1/2	B0139BG	B0139BE
17	Connector, R 1/4	B0139BD	B0139BB
17	Connector, Weld (1/2 in Schedule 80 Pipe)	N0141XR	N0141XP

Table 9. Ermeto Connectors

Size	316	Carbon Steel
1/4 NPT x 6 mm	U7002AS	U7002AT
1/2 NPT x 12 mm	U7002AP	U7002AR

Table 10. Output Signal Test Tee

Part No.	Qty.	Part Name
D6002BK	2	Nipple
D6002BL	1	Valve
Q0101NE	1	Plug
0040508	1	Tee
96000BL	1	Assembly Drawing

Recommended Spare Parts Summary

Figure Number	Item Number	Part Number	Part Name	Number of Parts Recommended for		
				1 Inst.	5 Inst.	20 Ints.
The following components are in the Instrument Transmission System:						
Figure 1	9	D0123MZ	O-ring, 4.5 mm (0.18 in) ID	2	4	6
	20	N0143XN	O-ring, 15.6 mm (0.61 in) ID	0	0	1
	32	U0119TB	Nozzle Assembly	1	1	2
	36	D0124QP	Orifice Screw Assembly (Since Sept. 1977)	1	2	3
	37	D0123MZ	O-ring, 4.5 mm (0.18 in) ID	1	2	3
	38	A037744	O-ring, 2.9 mm (0.11 in) ID	1	2	3
	41	C0136HZ	Relay Replacement Kit	1	1	2
	42	C0100EM	Gasket	1	2	4
	43	U0103FP	Screen	2	4	8
The following parts are used in the Instrument Measuring System:						
Figure 2	1	B0138MJ	Vent Screw	0	1	3
	2	D0161QT	Vent Plug	0	1	3
	6	Below	Capsule Assembly, 316 ss Ranges 0-5 to 0-25 inH ₂ O	0	0	1
		N0150TN	Silicone filled			
		N0150TP	Flurolube filled (for oxygen service)			
		N0150TQ	High viscosity fill			
		N0150TR	Gold plated (includes gold plated flexure)			
	9	U0102ML	Gasket	0	1	2
	12	Below	O-ring	0	1	2
		U0102MX	Silicone (standard)			
		U0102TK	Viton A			
		U0102XE	ptfe (cleaned for oxygen service)			
		U0102XK	Glass filled ptfe (to 375°F, 190°C)			
	15	D0114FL	Screen, 316 ss	2	4	8
	16	Below	Gasket	2	4	8
		D0114RB	ptfe			
		D0120AC	Glass filled ptfe (to 375°F, 190°C)			
		U0102XC	Pair of ptfe (cleaned for oxygen service)			
	19	Below	Gasket	2	4	8
		D0124DN	316 ss (standard)			
D0117TW		ptfe				
D0124BE		Glass filled ptfe (to 375°F, 190°C)				
U0102XA		Pair of ptfe (cleaned for oxygen service)				
The following regulators are used in the Air Filter Sets:						
Figure 7	1	B0123HD	Fixed Filter Regulator	0	0	1
Figure 8	4	B0123HE	Adjustable Filter Regulator	0	0	1
	11	Below	Pressure Gauge	0	1	2
		P0103YM	0 to 30 psi/0 to 20 bar			
		P0121BL	0 to 200 kPa/0 to 2 kg/cm ²			
	P0122JD	Green band				

NOTES

Notes

Invensys Systems, Inc.
10900 Equity Drive
Houston, TX 77041
United States of America

schneider-electric.com

Global Customer Support
Inside U.S.: 1-866-746-6477
Outside U.S.: 1-508-549-2424
Website: <http://support.ips.invensys.com>

Copyright 1971-2015 Invensys Systems, Inc.
All rights reserved.

Invensys, Foxboro, and d/p Cell are trademarks of Invensys Limited, its subsidiaries, and affiliates. All other trademarks are the property of their respective owners.

Invensys is now part of Schneider Electric.