

# IECEX Hazardous Area Approvals Fisher™ FIELDVUE™ DVC6200 Series Digital Valve Controllers



## Hazardous Area Approvals and Special Instructions for “Safe Use” and Installations in Hazardous Locations

Certain nameplates may carry more than one approval, and each approval may have unique installation/wiring requirements and/or conditions of “safe use”. These special instructions for “safe use” are in addition to, and may override, the standard installation procedures. Special instructions are listed by approval type.

### Note

This information supplements the nameplate markings affixed to the product and the DVC6200 Series quick start guide ([D103556X012](#)), available from your Emerson sales office or Local Business Partner, or at [Fisher.com](#).

Always refer to the nameplate itself to identify the appropriate certification.

### ⚠ WARNING

Failure to follow these conditions of “safe use” could result in personal injury or property damage from fire or explosion and area re-classification.

## Flameproof

### ⚠ WARNING

Do not open while energized.

Potential electrostatic charging hazard. Do not rub or clean the cover with solvents. To do so could result in an explosion.

### Covered by Standards:

IEC 60079-0:2011

IEC 60079-1:2007

#### DVC6200 and DVC6205 Series (HART HW1 & HW2, SIS, FOUNDATION Fieldbus, PROFIBUS)

Ex d IIC T5 (Ta ≤ 80°C) / T6 (Ta ≤ 75°C) Gb

30 V max, 20 mA

IP66

#### DVC6215 Remote Mount

Ex d IIC T4 (Ta ≤ 125°C) / T5 (Ta ≤ 95°C) / T6 (Ta ≤ 80°C) Gb

30 V max, 20 mA

IP66

## Dust

### **⚠ WARNING**

**Potential electrostatic charging hazard. Do not rub or clean the cover with solvents. To do so could result in an explosion.**

---

#### Covered by Standards:

IEC 60079-0:2011

IEC 60079-31:2013

#### **DVC6200 Series (HART HW1 & HW2, SIS, FOUNDATION Fieldbus, PROFIBUS)**

Ex tb IIC T88°C (Ta ≤ 80°C) Db

Approval requires fluorosilicone elastomers

30 V max, 20 mA

IP66

## Type n

### **⚠ WARNING**

**Do not open while energized.**

**Potential electrostatic charging hazard. Do not rub or clean the cover with solvents. To do so could result in an explosion.**

---

#### Covered by Standards:

IEC 60079-0:2011

IEC 60079-15:2010

#### **DVC6200 and DVC6205 Series (HART HW1 & HW2, SIS, FOUNDATION Fieldbus, PROFIBUS)**

Ex nC IIC T5 (Ta ≤ 80°C) / T6 (Ta ≤ 75°C) Gc

30 V max, 20 mA

IP66

#### **DVC6215 Remote Mount**

Ex nA IIC T4 (Ta ≤ 125°C) / T5 (Ta ≤ 95°C) / T6 (Ta ≤ 80°C) Gc

30 V max, 20 mA

IP66

## Intrinsically Safe

### **⚠ WARNING**

**Potential electrostatic charging hazard. Do not rub or clean the cover with solvents. To do so could result in an explosion.**

**The apparatus enclosure contains aluminum and is considered to constitute a potential risk of ignition by impact or friction. Care must be taken into account during installation and use to prevent impact or friction.**

#### Covered by Standards:

IEC 60079-0:2011

IEC 60079-11:2011

#### **DVC6200 Series (HART HW1 & HW2, SIS)**

Ex ia IIC or IIB T5/T6 Ga (see figures 1 and 5)

Ex ia IIIC Txxx°C Da (see figures 1 and 5)

Dust approval requires fluorosilicone elastomers

#### **DVC6205 Series (HART HW2, SIS)**

Ex ia IIC or IIB T5/T6 Ga (see figure 2)

#### **DVC 6200 Series (FOUNDATION Fieldbus, PROFIBUS)**

Ex ia IIC T4/T5/T6 Ga (see figure 3)

Ex ia IIIC Txxx°C Da (see figure 3)

Dust approval requires fluorosilicone elastomers

#### **DVC6205 Series (FOUNDATION Fieldbus, PROFIBUS)**

Ex ia IIC T4/T5/T6 Ga (see figure 4)

IP66

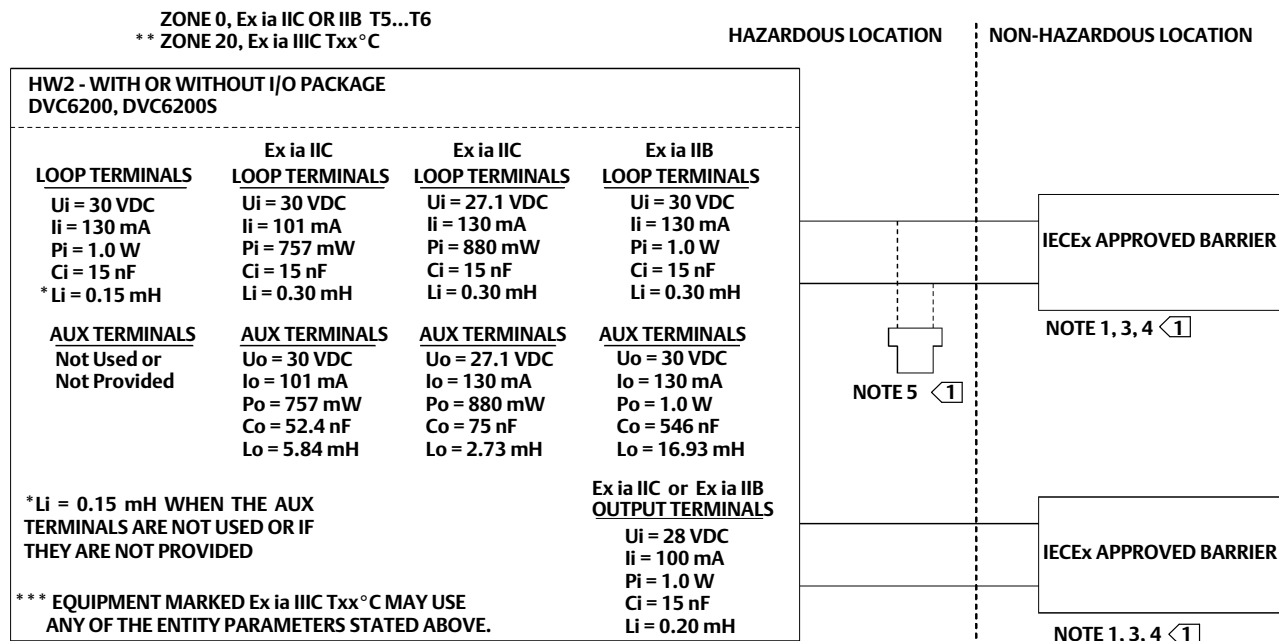
#### **DVC6215 Remote Mount**

Ex ia IIC T4/T5/T6 Ga (see figure 2 and 4)

Intrinsically safe when connected per drawing GE42990, as shown in the following figures

- DVC6200 HW2 and DVC6200 SIS** ..... figure 1 and 6
- DVC6205, DVC6205 SIS, and DVC6215 Remote Mount** ..... figure 2 and 6
- DVC6200f and DVC6200p** ..... figure 3 and 6
- DVC6205f, DVC6205p, and DVC6215 Remote Mount** ..... figure 4 and 6
- DVC6200 HW1** ..... figure 5 and 6

Figure 1. IECEx Loop Schematics—FIELDVUE DVC6200 HW2 and DVC6200 SIS



	Ex ia IIC or IIB T5...T6		** Ex ia IIIC Txx°C	
	WITHOUT I/O PACKAGE	WITH I/O PACKAGE	WITHOUT I/O PACKAGE	WITH I/O PACKAGE
<b>TYPE</b>	T CODE =	T CODE =	Txx °C =	Txx °C =
<b>DVC6200 DVC6200S</b>	T5 (Ta ≤ 80°C)	T5 (Ta ≤ 80°C)	T91°C (Ta ≤ 80°C)	T104°C (Ta ≤ 80°C)
	T6 (Ta ≤ 74°C)	T6 (Ta ≤ 61°C)	T85°C (Ta ≤ 74°C)	T85°C (Ta ≤ 61°C)

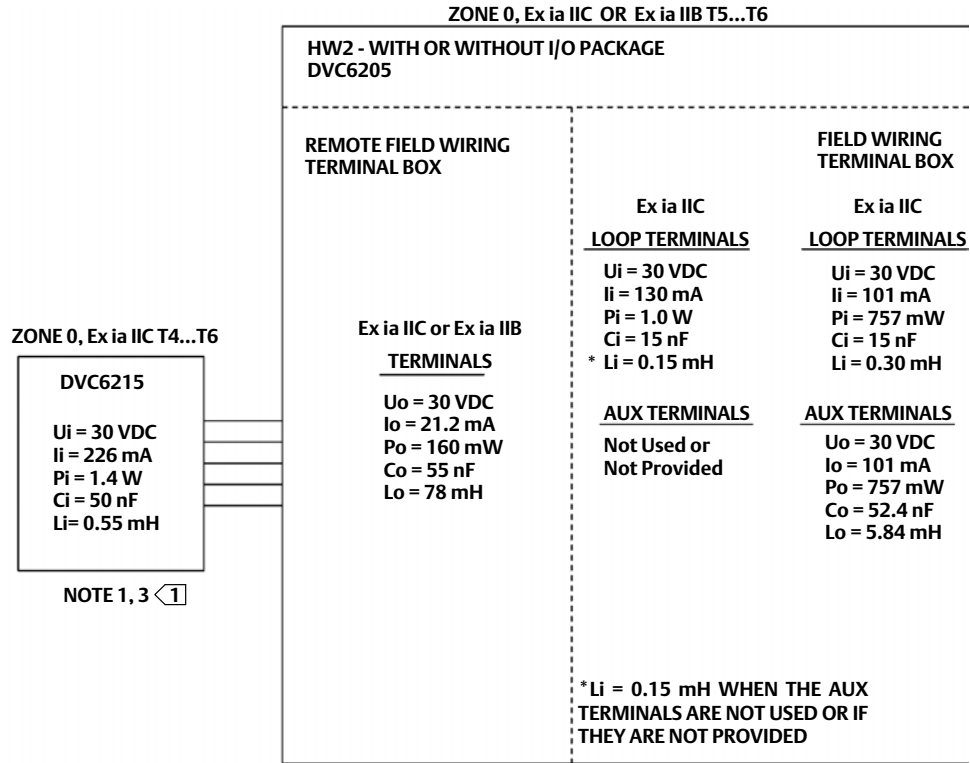
POWER MAY BE APPLIED TO EITHER THE LOOP TERMINALS OR OUTPUT TERMINALS OR TO BOTH SETS OF TERMINALS AT THE SAME TIME  
UNITS WITHOUT I/O PACKAGE WILL NOT HAVE "OUTPUT TERMINALS" OR "AUX TERMINALS" AVAILABLE FOR CONNECTION

GE42990 Sheet 11, Rev. C

\*\* ONLY IF THE NAMEPLATE BEARS THIS MARKING.

1 SEE NOTES IN FIGURE 6

Figure 2. IECEx Loop Schematics—FIELDVUE DVC6205, DVC6205 SIS, and DVC6215

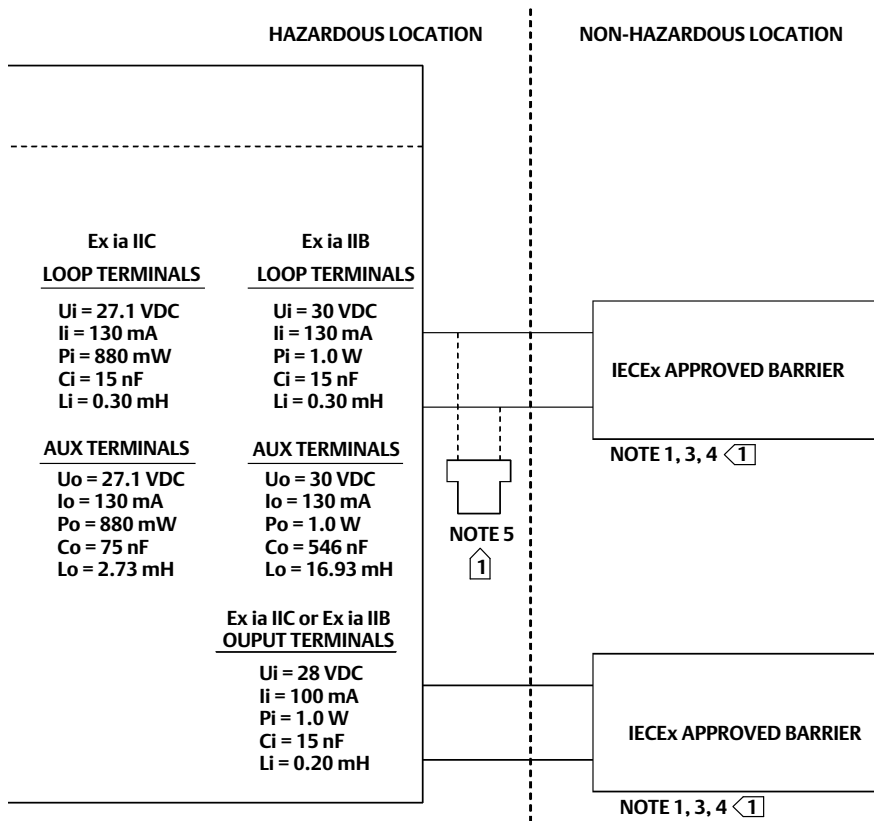


	Ex ia IIC T4...T6
TYPE	T CODE =
DVC6215	T4 (Ta ≤ 125°C)
	T5 (Ta ≤ 95°C)
	T6 (Ta ≤ 80°C)

GE42990 Sheet 12 Rev. C

	Ex ia IIC or Ex ia IIB	
	WITHOUT I/O PACKAGE	WITH I/O PACKAGE
TYPE	T CODE =	T CODE =
DVC6205	T5 (Ta ≤ 80°C)	T5 (Ta ≤ 80°C)
	T6 (Ta ≤ 74°C)	T6 (Ta ≤ 61°C)

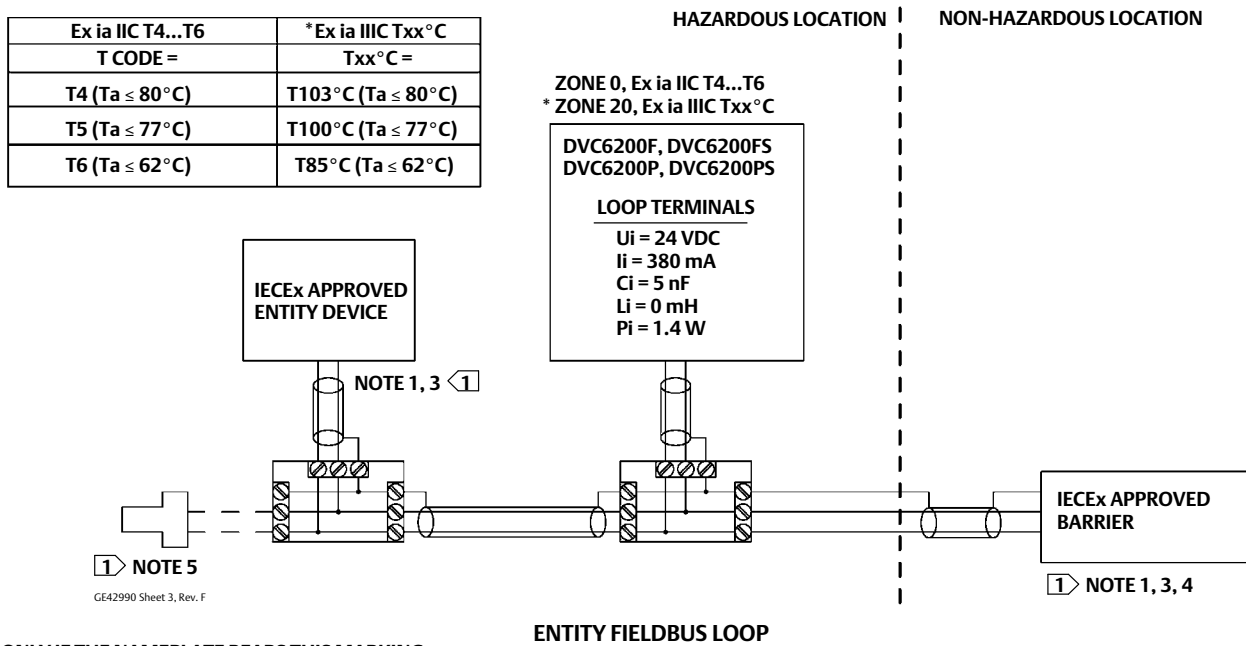
1 SEE NOTES IN FIGURE 6



POWER MAY BE APPLIED TO EITHER THE LOOP TERMINALS OR OUTPUT TERMINALS OR TO BOTH SETS OF TERMINALS AT THE SAME TIME

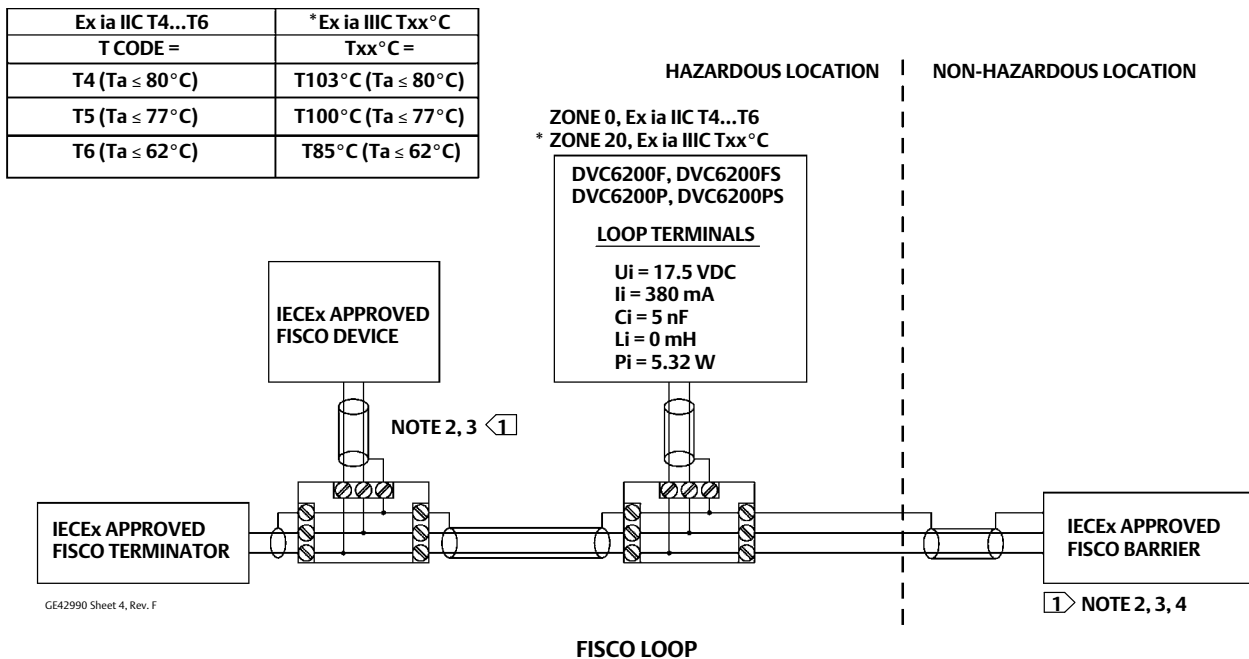
UNITS WITHOUT I/O PACKAGE WILL NOT HAVE "OUTPUT TERMINALS" OR "AUX TERMINALS" AVAILABLE FOR CONNECTION

Figure 3. IECEx Loop Schematics—FIELDVUE DVC6200f and DVC6200p



\* ONLY IF THE NAMEPLATE BEARS THIS MARKING.

SEE NOTES IN FIGURE 6

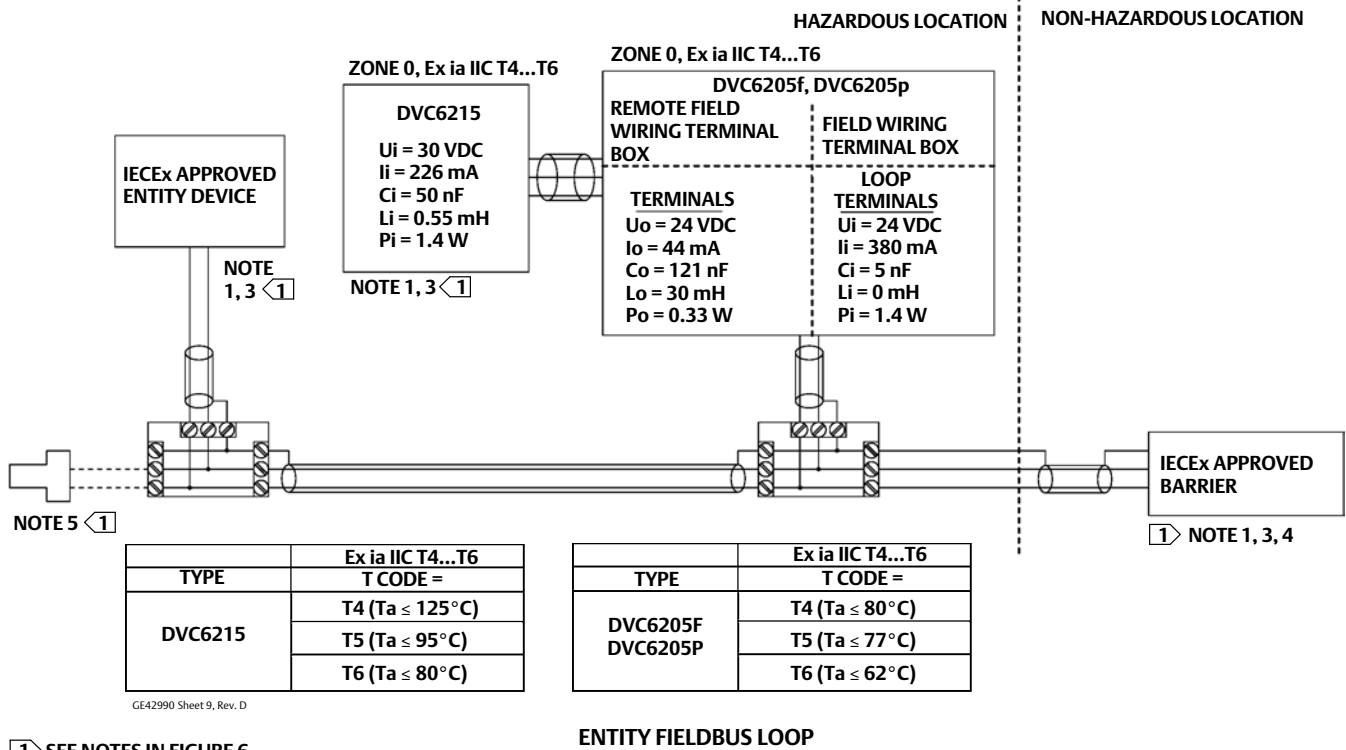


\* ONLY IF THE NAMEPLATE BEARS THIS MARKING.

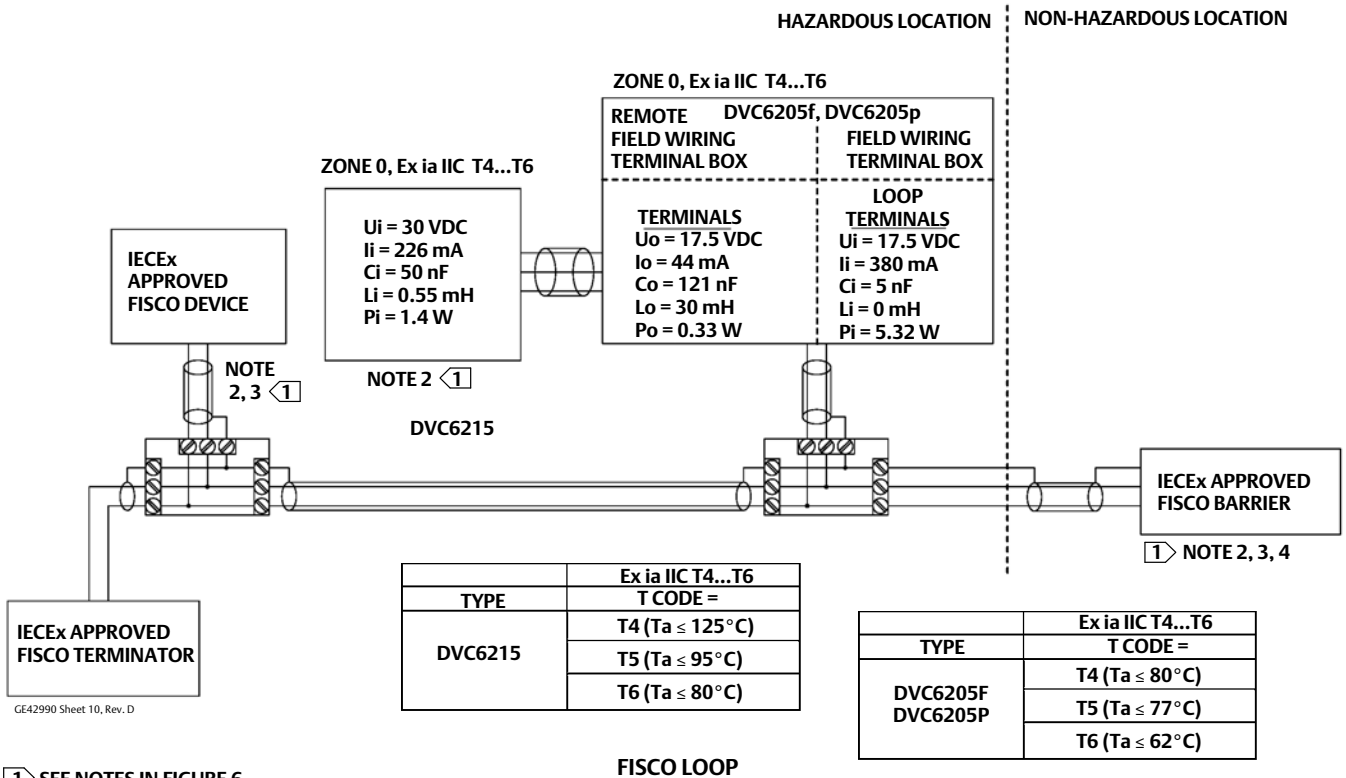
SEE NOTES IN FIGURE 6



Figure 4. IECEx Loop Schematics—FIELDVUE DVC6205f, DVC6205p, and DVC6215

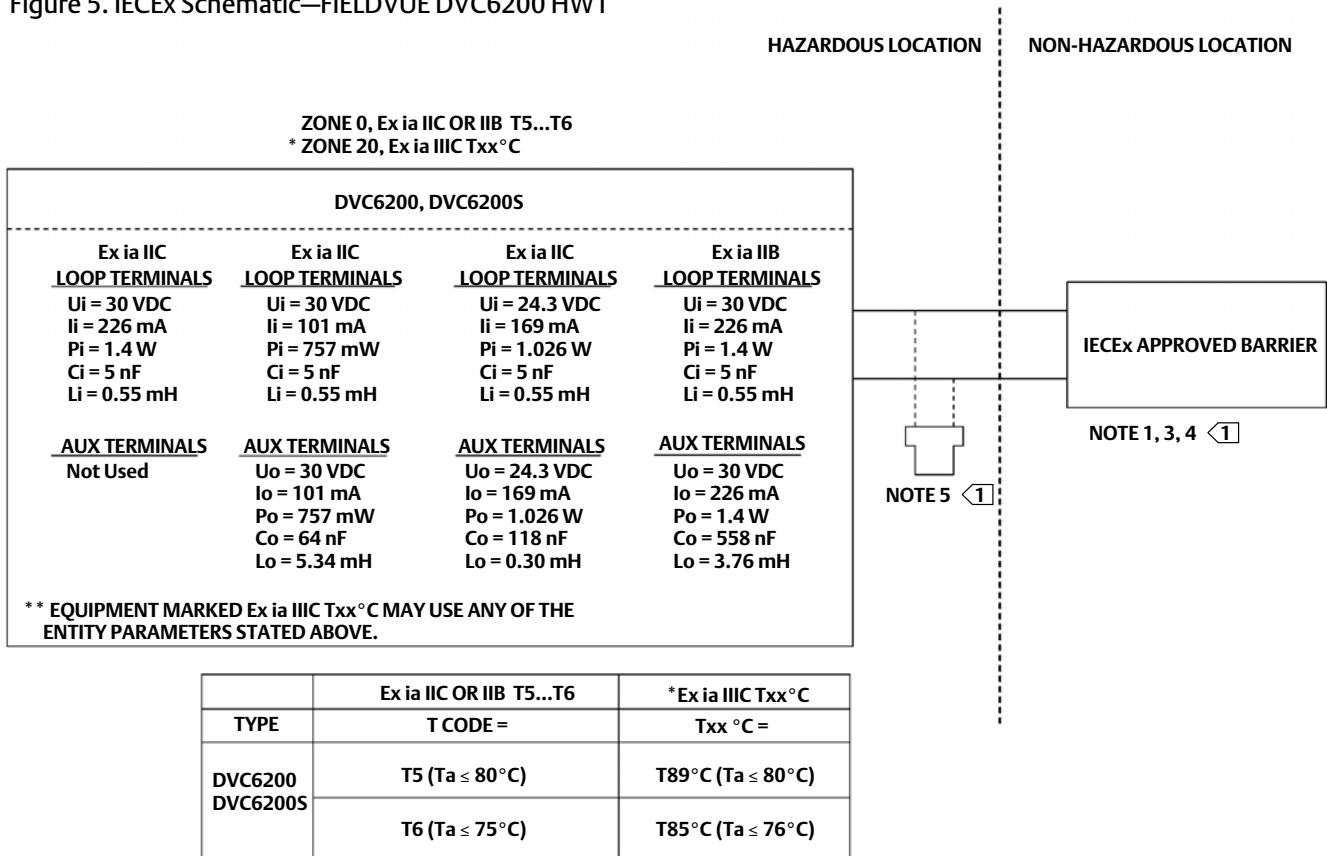


SEE NOTES IN FIGURE 6



SEE NOTES IN FIGURE 6

Figure 5. IECEx Schematic—FIELDVUE DVC6200 HW1



GE42990 Sheet 2, Rev. F

\* ONLY IF THE NAMEPLATE BEARS THIS MARKING.

1 SEE NOTES IN FIGURE 6

Figure 6. Notes for IECEx Loop Schematics

THE APPARATUS ENCLOSURE CONTAINS ALUMINUM AND IS CONSIDERED TO CONSTITUTE A POTENTIAL RISK OF IGNITION BY IMPACT AND FRICTION. AVOID IMPACT AND FRICTION DURING INSTALLATION AND USE TO PREVENT RISK OF IGNITION.

1 THE ENTITY CONCEPT ALLOWS INTERCONNECTION OF INTRINSICALLY SAFE APPARATUS TO ASSOCIATED APPARATUS NOT SPECIFICALLY EXAMINED IN SUCH COMBINATION. THE CRITERIA FOR INTERCONNECTION IS THAT THE VOLTAGE ( $V_{max}$  OR  $U_i$ ), THE CURRENT ( $I_{max}$  OR  $I_i$ ), AND THE POWER ( $P_{max}$  OR  $P_i$ ) OF THE INTRINSICALLY SAFE APPARATUS MUST BE EQUAL TO OR GREATER THAN THE VOLTAGE ( $V_{oc}$  OR  $U_o$ ), AND THE CURRENT ( $I_{sc}$  OR  $I_o$ ), AND THE POWER ( $P_o$ ) DEFINED BY THE ASSOCIATED APPARATUS. IN ADDITION, THE SUM OF THE MAX UNPROTECTED CAPACITANCE ( $C_i$ ) AND MAX UNPROTECTED INDUCTANCE ( $L_i$ ), INCLUDING THE INTERCONNECTING CABLING CAPACITANCE ( $C_{cable}$ ) AND CABLING INDUCTANCE ( $L_{cable}$ ) MUST BE LESS THAN THE ALLOWABLE CAPACITANCE ( $C_a$ ) AND INDUCTANCE ( $L_a$ ) DEFINED BY THE ASSOCIATED APPARATUS. IF THE ABOVE CRITERIA IS MET, THEN THE COMBINATION MAY BE CONNECTED.

$$V_{max} \text{ or } U_i \geq V_{oc} \text{ or } U_o \quad I_{max} \text{ or } I_i \geq I_{sc} \text{ or } I_o \quad P_{max} \text{ or } P_i \geq P_o \quad C_i + C_{cable} \leq C_a \quad L_i + L_{cable} \leq L_a$$

2 THE FISCO CONCEPT ALLOWS INTERCONNECTION OF INTRINSICALLY SAFE APPARATUS TO ASSOCIATED APPARATUS NOT SPECIFICALLY EXAMINED IN SUCH COMBINATION. THE CRITERIA FOR THE INTERCONNECTION IS THAT THE VOLTAGE ( $V_{max}$  OR  $U_i$ ), CURRENT ( $I_{max}$  OR  $I_i$ ), AND POWER ( $P_{max}$  OR  $P_i$ ), WHICH AN INTRINSICALLY SAFE APPARATUS CAN RECEIVE AND REMAIN INTRINSICALLY SAFE, CONSIDERING FAULTS, MUST BE EQUAL TO OR GREATER THAN THE VOLTAGE ( $V_{oc}$  OR  $U_o$ ), CURRENT ( $I_{sc}$  OR  $I_o$ ), AND POWER ( $P_o$ ) LEVELS WHICH CAN BE DELIVERED BY THE ASSOCIATED APPARATUS, CONSIDERING FAULTS AND APPLICABLE FACTORS. IN ADDITION THE MAXIMUM UNPROTECTED CAPACITANCE ( $C_i$ ) AND INDUCTANCE ( $L_i$ ) OF EACH APPARATUS (OTHER THAN THE TERMINATION) CONNECTED TO THE FIELDBUS MUST BE LESS THAN OR EQUAL TO 5 nF AND 10 uH RESPECTIVELY.

IN EACH SEGMENT ONLY ONE ACTIVE DEVICE, NORMALLY THE ASSOCIATED APPARATUS, IS ALLOWED TO PROVIDE THE NECESSARY ENERGY FOR THE FIELDBUS SYSTEM. THE VOLTAGE ( $U_o$  OR  $V_{oc}$  OR  $V_t$ ) OF THE ASSOCIATED APPARATUS HAS TO BE LIMITED TO THE RANGE OF 9 V TO 17.5 VDC. ALL OTHER EQUIPMENT CONNECTED TO THE BUS CABLE HAS TO BE PASSIVE, MEANING THAT THEY ARE NOT ALLOWED TO PROVIDE ENERGY TO THE SYSTEM, EXCEPT FOR A LEAKAGE CURRENT OF 50 uA FOR EACH CONNECTED DEVICE. SEPARATELY POWERED EQUIPMENT NEEDS A GALVANIC ISOLATION TO ASSURE THAT THE INTRINSICALLY SAFE FIELDBUS CIRCUIT REMAINS PASSIVE.

THE CABLE USED TO CONNECT THE DEVICES NEEDS TO HAVE THE PARAMETERS IN THE FOLLOWING RANGE:

- LOOP RESISTANCE R': 15 TO 150 ohms/km
- INDUCTANCE PER UNIT LENGTH L: 0.4 TO 1 mH/km
- CAPACITANCE PER UNIT LENGTH C': 80 TO 200 nF/km
- C' = C' LINE/LINE + 0.5' LINE/SCREEN, IF BOTH LINES ARE FLOATING OR
- C' = C' LINE/LINE + C' LINE/SCREEN, IF THE SCREEN IS CONNECTED TO ONE LINE.
- LENGTH OF SPLICE: < 1 m (T-BOX MUST ONLY CONTAIN TERMINAL CONNECTIONS WITH NO ENERGY STORAGE CAPABILITY)
- LENGTH OF SPUR CABLE: < 30 M
- LENGTH OF TRUNK CABLE: < 1 km

AT EACH END OF THE TRUNK CABLE AN APPROVED INFALLIBLE TERMINATION WITH THE FOLLOWING PARAMETERS IS SUITABLE:

$$R = 90 \text{ TO } 100 \text{ ohms AND } C = 0 \text{ TO } 2.2 \text{ uF}$$

NOTE, A BUILT-IN TERMINATOR IS INCLUDED IN THE FIELD SIDE AND A SELECTABLE TERMINATOR IS AVAILABLE ON THE HOST SIDE.

THE NUMBER OF PASSIVE DEVICES CONNECTED TO THE BUS SEGMENT IS NOT LIMITED IN THE FISCO CONCEPT FOR INTRINSICALLY SAFE REASONS. IF THE ABOVE RULES ARE RESPECTED, UP TO A TOTAL LENGTH OF 1000 m (SUM OF THE LENGTH OF THE TRUNK CABLE AND ALL SPUR CABLES), THE INDUCTANCE AND CAPACITANCE OF THE CABLE WILL NOT IMPAIR THE INTRINSIC SAFETY OF THE INSTALLATION.

- 3 INSTALLATION MUST BE IN ACCORDANCE WITH THE NATIONAL WIRING PRACTICES OF THE COUNTRY IN USE.
- 4 LOOPS MUST BE CONNECTED ACCORDING TO THE BARRIER MANUFACTURER'S INSTRUCTIONS.
- 5 IF HAND-HELD COMMUNICATOR OR MULTIPLEXER IS USED, IT MUST BE IECEx APPROVED WITH ENTITY PARAMETERS AND INSTALLED PER THE MANUFACTURER'S CONTROL DRAWINGS.

Neither Emerson, Emerson Automation Solutions, nor any of their affiliated entities assumes responsibility for the selection, use or maintenance of any product. Responsibility for proper selection, use, and maintenance of any product remains solely with the purchaser and end user.

Fisher and FIELDVUE are marks owned by one of the companies in the Emerson Automation Solutions business unit of Emerson Electric Co. Emerson Automation Solutions, Emerson, and the Emerson logo are trademarks and service marks of Emerson Electric Co. All other marks are the property of their respective owners.

The contents of this publication are presented for informational purposes only, and while every effort has been made to ensure their accuracy, they are not to be construed as warranties or guarantees, express or implied, regarding the products or services described herein or their use or applicability. All sales are governed by our terms and conditions, which are available upon request. We reserve the right to modify or improve the designs or specifications of such products at any time without notice.

Emerson Automation Solutions  
Marshalltown, Iowa 50158 USA  
Sorocaba, 18087 Brazil  
Cernay, 68700 France  
Dubai, United Arab Emirates  
Singapore 128461 Singapore

[www.Fisher.com](http://www.Fisher.com)

