



## Monarch Instrument Track-It™ Pressure Calibration Software

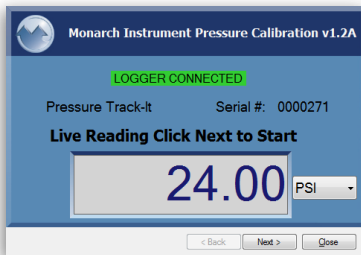
**Track-It™ Pressure Calibration Software** works with all Monarch Instrument Pressure Series Data Loggers, Digital Gauges, and Transmitters.



### Install Track-It™ Pressure Calibration Software

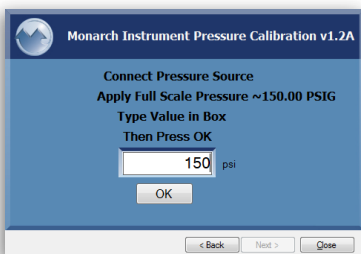
**IMPORTANT! Do not connect the logger prior to installing the software.**

**SERIAL COMMUNICATION:** The logger has a mini USB port. After the software and USB drivers have been installed plug the cable into this port and the other end into the USB port on your PC/Laptop. The software needs to be installed in order to work with the logger.



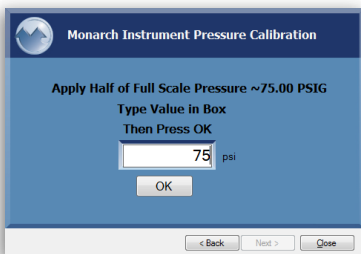
**Track-It™ Pressure Calibration Software** is a software Wizard, it automatically prompts you through the step-by-step procedure to perform your calibration.

Once the connection has been established, it will be confirmed by a green “LOGGER CONNECTED” indication. This window allows you to view real time pressure values from the DUT. To continue, click Next>.

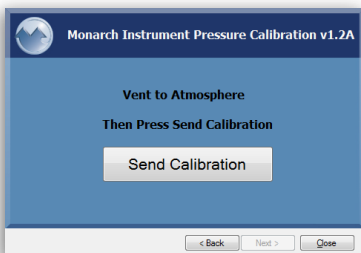


The software detects the full scale value and asks for a pressure source to be applied at that approximate value.

Wait for your source to stabilize, enter the reference value, and press OK.



Some loggers support two point calibrations, and some support three points. The software automatically detects which is appropriate and prompts the next appropriate step. In a three point calibration, an adjustment is allowed for approximately mid-range.



The final calibration point is the low value of the range. Wait for a stable low value and press “Send Calibration”. This completes the procedure.