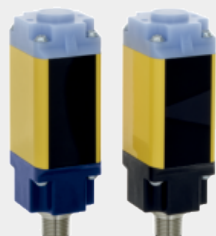


## SLB440-ER-2-ST



- SLB 440 Series -
- Safe OSSD outputs to PLe
- Automatic start or restart interlock
- Set-up tool and diagnostic indication
- Height range 75 m (Reserve up to 90 m)
- Compact design With integral evaluation
- Sturdy metal enclosure with M12 connector or cable
- Version with heater for outdoor applications down to -30°C

## Data

### General data

Product name	SLB440
Standards	EN 61496-1 EN 61496-2
Coding, light barrier beam	2
Enclosure material	Aluminium
Gross weight	170 g
Reaction time, maximum	22 ms
Reaction time, minimum	7 ms

K.A. Schmersal GmbH & Co. KG, Möddinghofe 30, D-42279 Wuppertal

The details and data referred to have been carefully checked. Images may diverge from original. Further technical data can be found in the manual. Technical amendments and errors possible.

Generated on 24.11.2020 05:20:00